

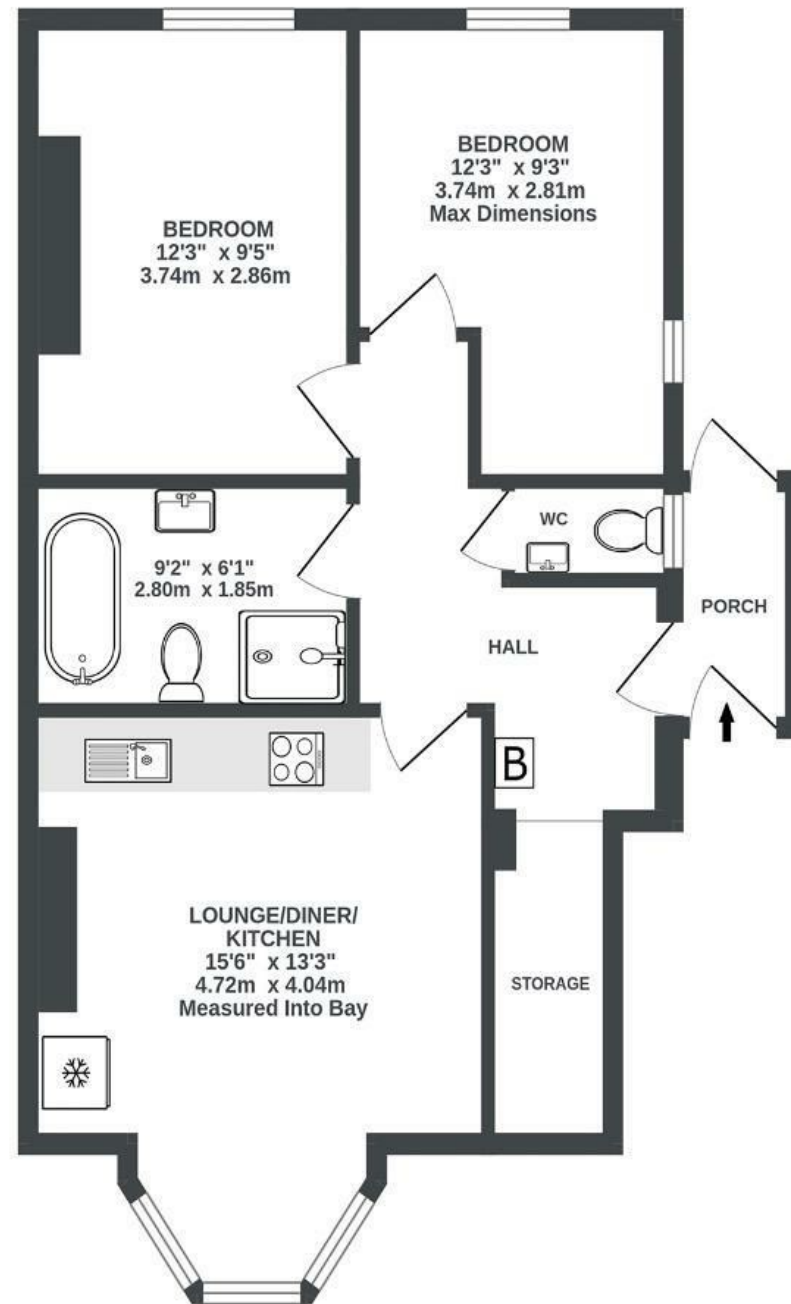
Belmont Road

ST ANDREWS

APPROXIMATE FLOOR AREA
53 SQM / 570 SQFT



GROUND FLOOR
570 sq.ft. (53.0 sq.m.) approx.



Illustrations are for reference purposes only, measurements are approximate, not to scale.

~~Boardwalk~~

3 Belmont Road

ST. ANDREWS, BRISTOL



£400,000



2 Bedrooms



BS6 5AN



1 Bathrooms

"It's location to the bottom of Gloucester Road is unmatched. You have access to numerous cafes and restaurants, my favourites being: the Coconut Tree for evening food, Fed for a coffee and pastry, and the Prince of Wales for some drinks. Access to the centre of Bristol can be done in a 20 minute walk or quick bike ride so meeting friends is really convenient. The downs are a 30 minute walk away. There are gyms within walking distance along with numerous other sports facilities. Having the parking spot is invaluable in this area and the garden is the cherry on top. It is so secluded and tranquil for a property in a bustling area."

