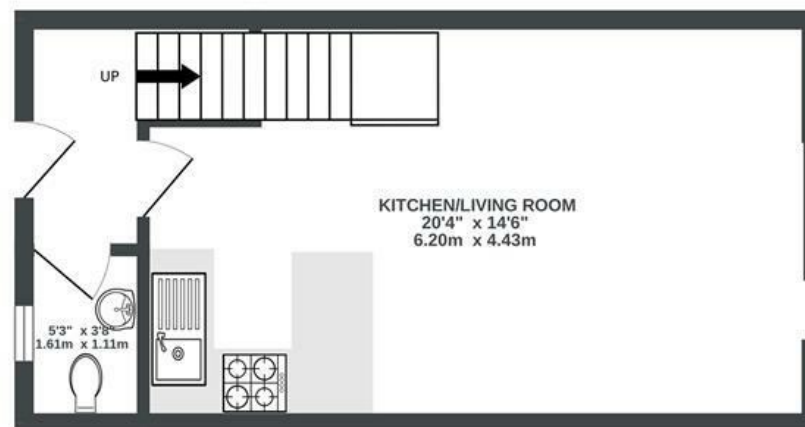


# Catherine Mead Mews BEDMINSTER

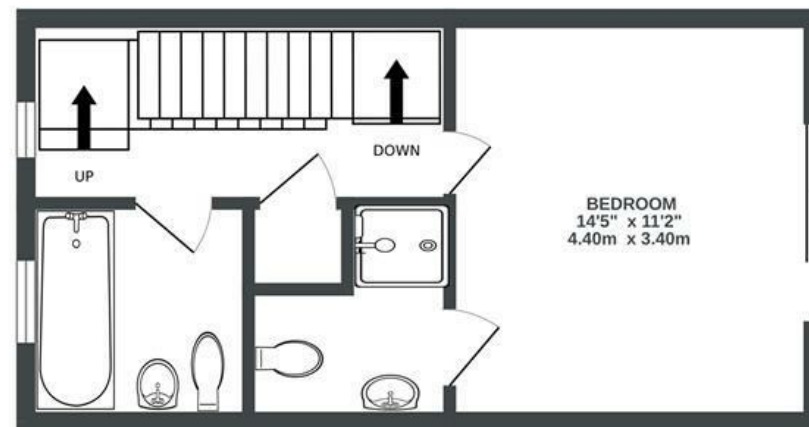
APPROXIMATE FLOOR AREA  
81.1 SQM / 873 SQFT



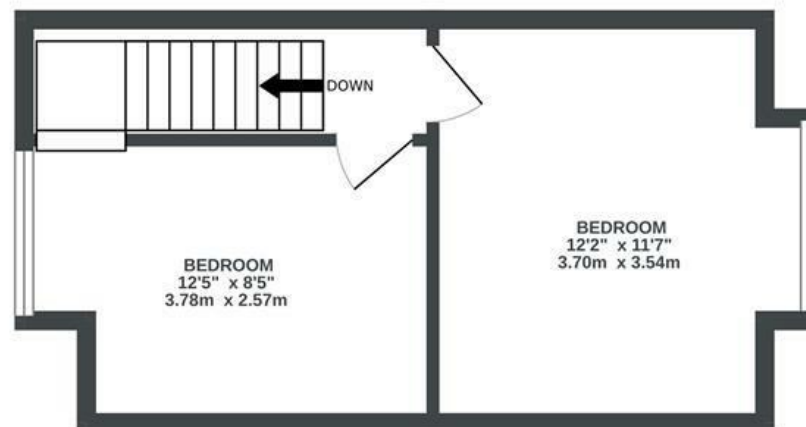
GROUND FLOOR



1ST FLOOR



2ND FLOOR



Boardwalk

# Catherine Mead

, BRISTOL



£400,000



3 Bedrooms



BS3 1FX



3 Bathrooms

*"We love living just minutes away from North St and Whapping Wharf. It always feels like an exciting area to live in, with some of our favourite restaurants, shops, pubs and bars. Highlights of the house itself include a garden which gets lots of sun in the summer that we love to use as much as possible. We also enjoy the very sociable open plan layout of the downstairs, and love having enough space to host our friends and family on weekends."*

