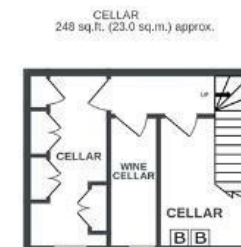
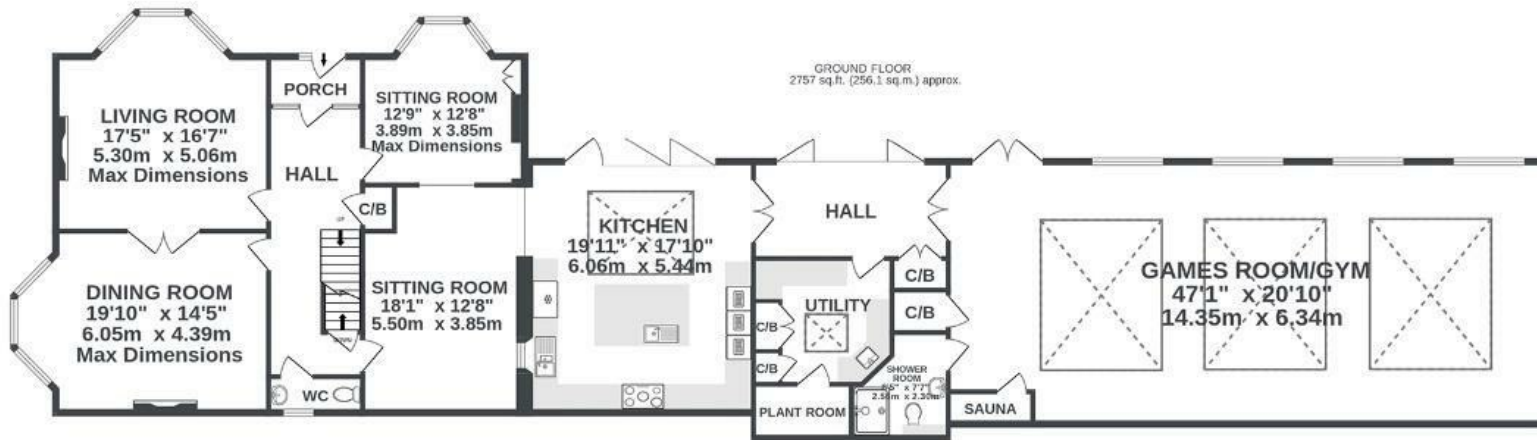


Cambridge Road

CLEVEDON

APPROXIMATE FLOOR AREA
452.3 SQM / 4869 SQFT



Illustrations are for reference purposes only, measurements are approximate, not to scale.

Boardwalk

Cambridge Road , CLEVEDON



£1,800,000



5 Bedrooms



BS21 7DN



3 Bathrooms

"We love the perfect symmetry and the seamless blend of original Victorian character with carefully chosen modern features. The house feels wonderfully spacious, is filled with natural light and offers complete privacy. The David Salisbury extension offers flexibility – the pool can be reinstated or adapted into a self-contained granny flat. This is a superb family home, with a stylish Smallbone-style kitchen, an extensive primary suite, and elegant Thomas Sanderson plantation shutters throughout."

