

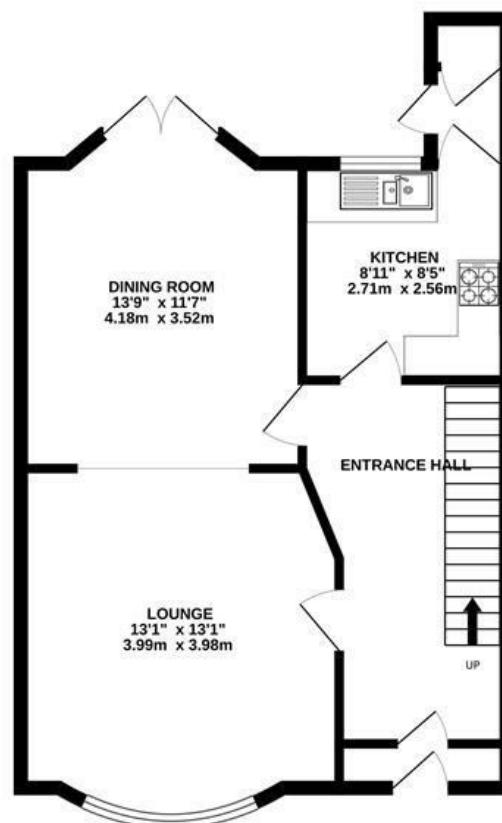
235 REDCATCH ROAD

KNOWLE

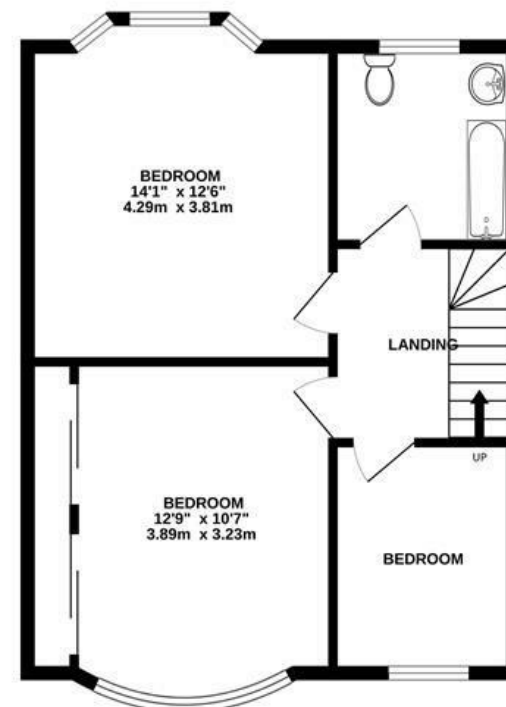
APPROXIMATE FLOOR AREA
99.5 SQM / 1071 SQFT



GROUND FLOOR
545 sq.ft. (50.6 sq.m.) approx.



1ST FLOOR
527 sq.ft. (48.9 sq.m.) approx.



Boardwalk

Redcatch Road

, BRISTOL



£460,000



3 Bedrooms



BS4 2HQ



1 Bathrooms

"We have loved our twelve years living on Redcatch Road. Considering that you are only 2 1/2 miles from the City centre, it's incredibly leafy up here. St Saviour's cherry blossom greets us in Spring, then the mature sycamores and beeches make the front a wall of green in summer. We star watch from the back garden, which faces South East. Because we are high up on a ridge, the City's light pollution is below us. You can see the fields on top of the Dundry hills change colour with the seasons from the rear bedroom bay windows. We are blessed with parks to walk our dog, with Redcatch Park and community garden being only 5 mins away, Perretts for Balloon watching 10 mins and Victoria Park 10 mins also. Having no houses opposite at the front also gives us a sense of privacy. We hope that the next family to live here will enjoy this warm, cheerful, light filled house as much as we have. The bay windows at the back keep the place warm in winter, so we don't often need to put the heating on, although we enjoy our traditional open fire on winter evenings."

