

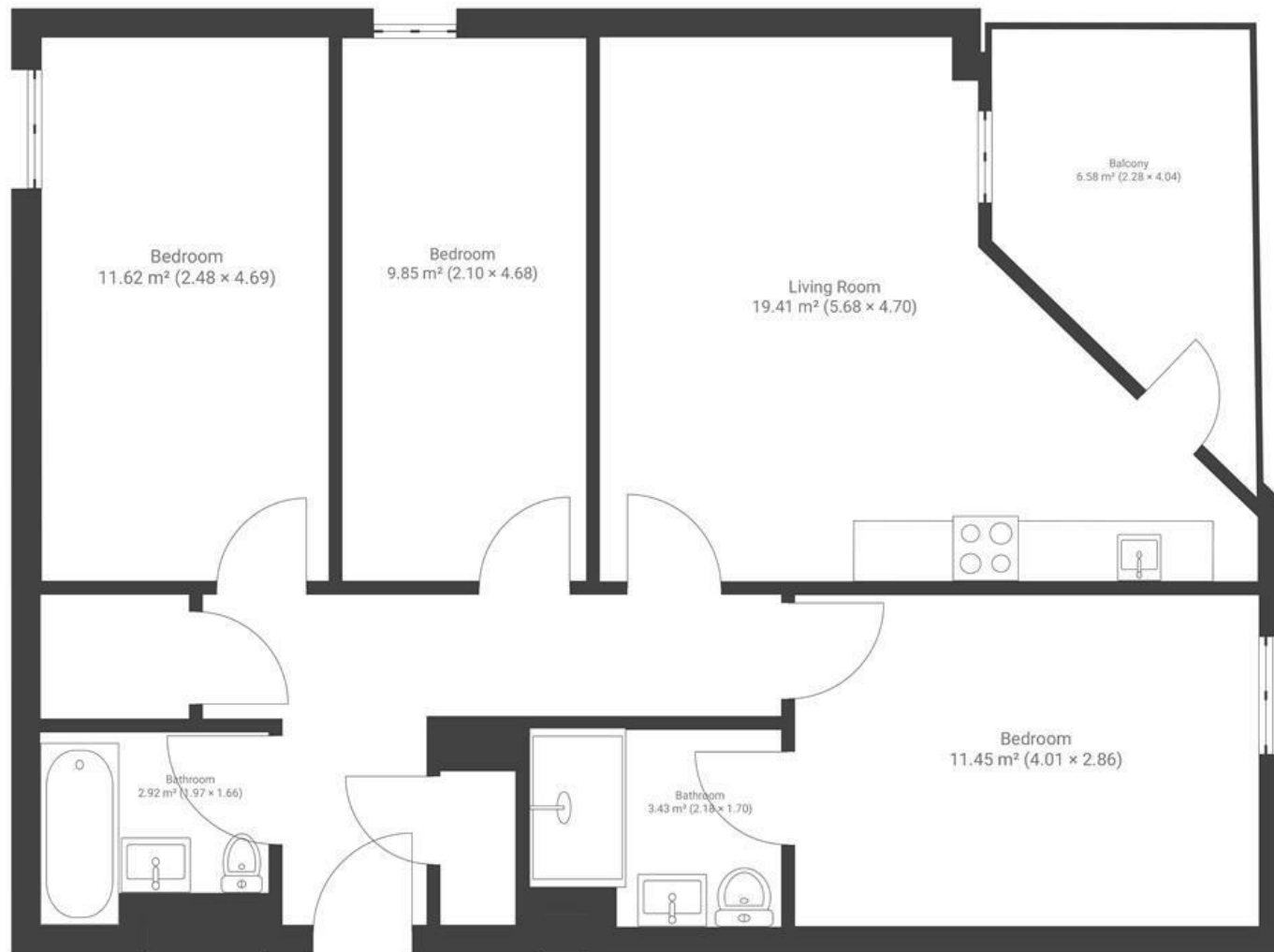
Stillhouse Lane

BEDMINSTER

APPROXIMATE FLOOR AREA
72 SQM / 775 SQFT



GROUND FLOOR



Boardwalk

Stillhouse Lane

BEDMINSTER, BRISTOL



£315,000



3 Bedrooms



BS3 4EP



2 Bathrooms

"I chose this flat because of its fantastic location on a cobbled side street just off East Street in Bedminster. I also liked the fact it is within a small development of 10 flats making it a secure a quiet development. I was pleasantly surprised to find somewhere with such spacious bedrooms for a three bedroom property too."

