

**Boardwalk**

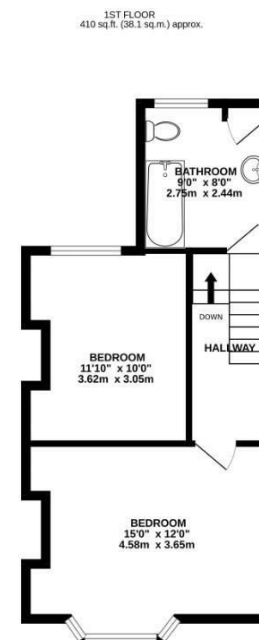
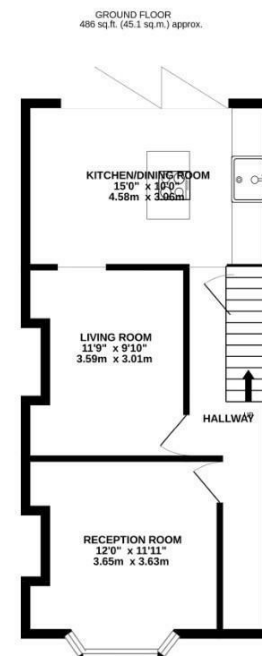
# Oakdene Avenue

, BRISTOL

## Oakdene Avenue

EASTVILLE

APPROXIMATE FLOOR AREA  
83.2 SQM / 895 SQFT



Illustrations are for reference purposes only, measurements are approximate, not to scale.

Boardwalk

# Oakdene Avenue , BRISTOL

£

£415,000



BS5 6QQ

zzz

2 Bedrooms



1 Bathrooms

*"We absolutely love the location living here, opposite Eastville Park, river and meadows as well as being central, making it easy to cycle. We've seen the best sunsets from the house and really enjoyed the open plan kitchen/diner with bi-fold doors, making it perfect to host friends. The snug is a cosy sanctuary in the winter evenings. The neighbours are lovely and there's a real sense of community on the street – it's incredibly handy to have a post office and shop at the top of the road too!"*

