

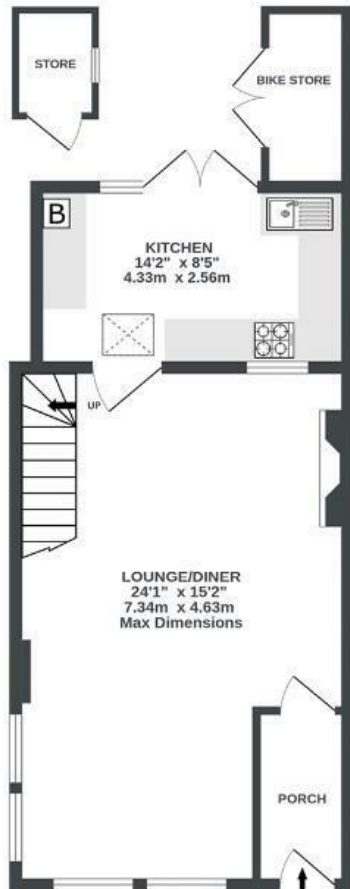
Richmond Road

MONTPELIER

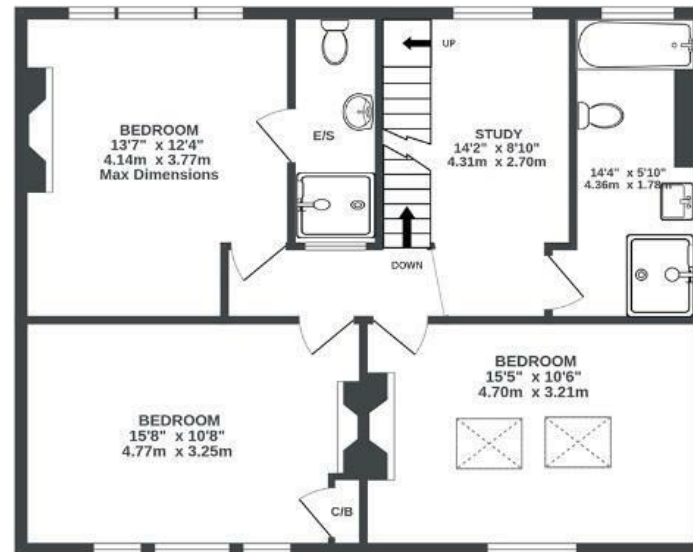
APPROXIMATE FLOOR AREA
114.6 SQM / 1233 SQFT



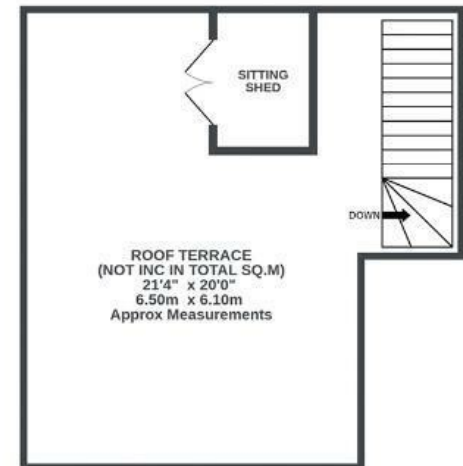
GROUND FLOOR
479 sq.ft. (44.5 sq.m.) approx.



1ST FLOOR
754 sq.ft. (70.1 sq.m.) approx.



2ND FLOOR
0 sq.ft. (0.0 sq.m.) approx.



Illustrations are for reference purposes only, measurements are approximate, not to scale.

Boardwalk

Richmond Road

MONTPELIER, BRISTOL

£

£775,000



BS6 5EN

zzz

3 Bedrooms



2 Bathrooms

"Richmond Road has always been my favourite road in Bristol. When I found this house I loved its uniqueness and saw great potential to develop it into something special. During 20 years here, the house, once a spacious shop, has become a vibrant social hub, from neighbourhood dinners to house gigs. We usually gravitate to the roof terrace which enjoys sun all day from morning coffee to a beer at sunset or an open fire at night, providing a secluded space with breathtaking views over the city."

