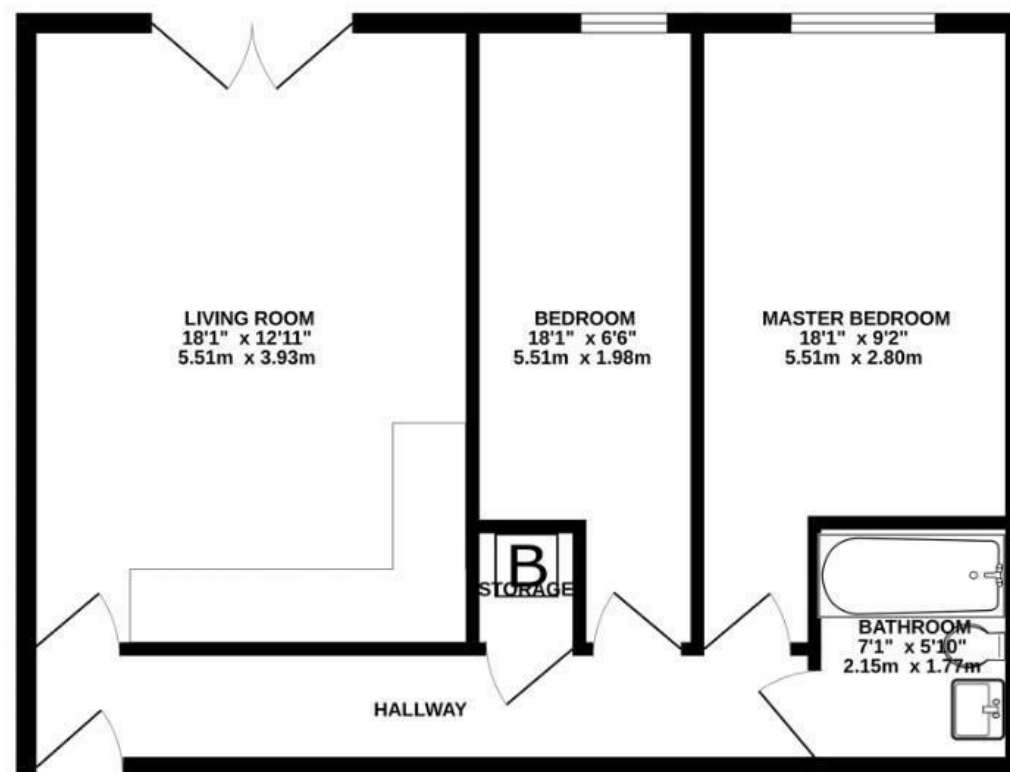


# Church Road

## ST GEORGE

APPROXIMATE FLOOR AREA  
57 SQM / 614 SQFT



Illustrations are for reference purposes only, measurements are approximate, not to scale.

Boardwalk

# Church Road

ST. GEORGE, BRISTOL

£

£285,000

zzz

2 Bedrooms



BS5 8AJ



1 Bathrooms

*"We feel so lucky to have found this beautiful flat in Fountain Park Court. The south-facing Juliet balcony overlooking the gardens on Beaconsfield Road fills the space with natural light—perfect for our collection of houseplants. It's been a joy having the river and Troopers Hill just a short stroll away, and with St George Park right across the road, it's felt like our own little oasis in the heart of the city."*

