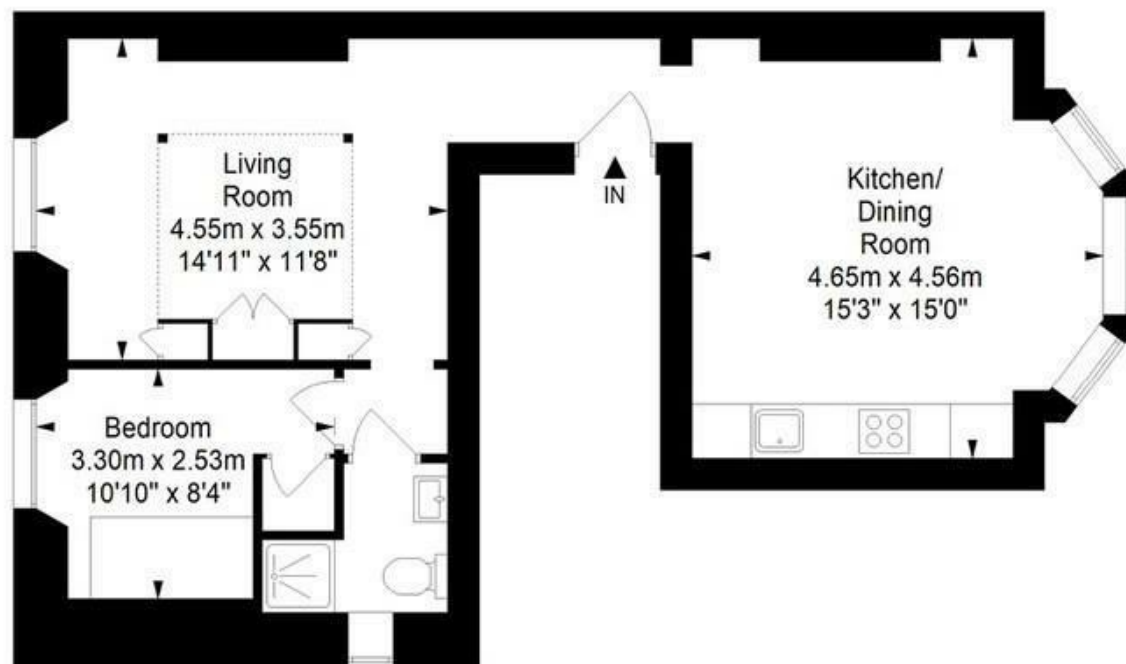


Redland Road

REDLAND

APPROXIMATE FLOOR AREA
49.5 SQM / 532.8 SQFT



Illustrations are for reference purposes only, measurements are approximate, not to scale.

Boardwalk

Redland Road

REDLAND, BRISTOL

£

£300,000



BS6 6AG

zzz

1 Bedrooms



1 Bathrooms

"With large sash windows at both the front and back, internally the flat is saturated with natural light, and with the communal front garden being south-facing, the afternoon and evening sun is a huge benefit. The ceiling height is vast which means we've been able to take advantage of high-level storage. The flat still retains its original features including all the wooden shutters and we recently opened up the old fireplace to install a log burner, which helps to heat the flat. One of our favourite things about living here is the view out of the back of the property as there is a large fur tree along with many other varieties, making you feel like you are out of the city."

