

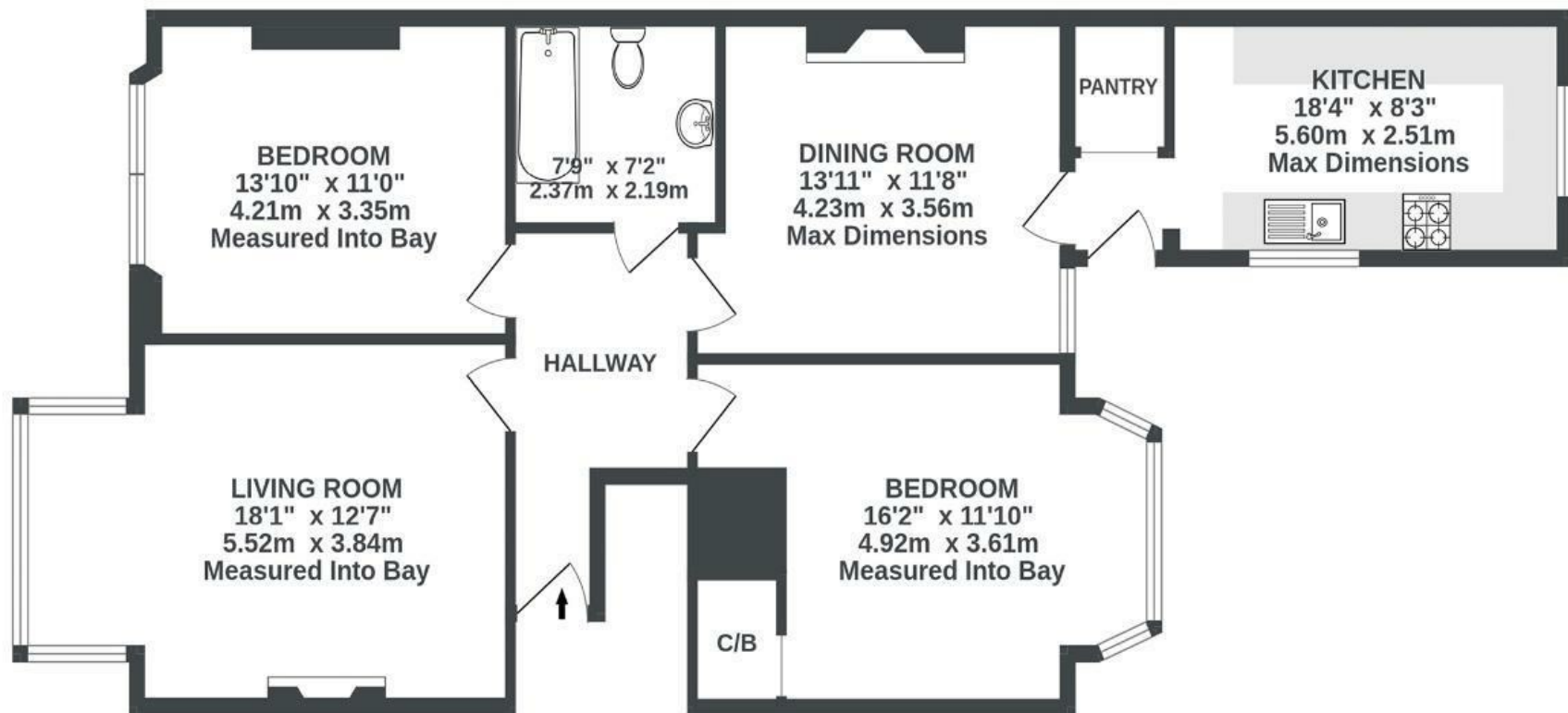
Effingham Road

ST ANDREWS

APPROXIMATE FLOOR AREA
88.7 SQM / 954 SQFT



GROUND FLOOR
954 sq.ft. (88.7 sq.m.) approx.



Illustrations are for reference purposes only, measurements are approximate, not to scale.

Boardwalk

Effingham Road , BRISTOL

£

£435,000



BS6 5AY

zzz

2 Bedrooms



1 Bathrooms

“Living opposite St Andrews Park has been amazing; watching the morning light come through the trees is such a nice way to start your day. We’re just around the corner from our favourite part of Gloucester Road as well, we’ll definitely miss going for a coffee at FED or a quick bite to eat at Pizzarova”

