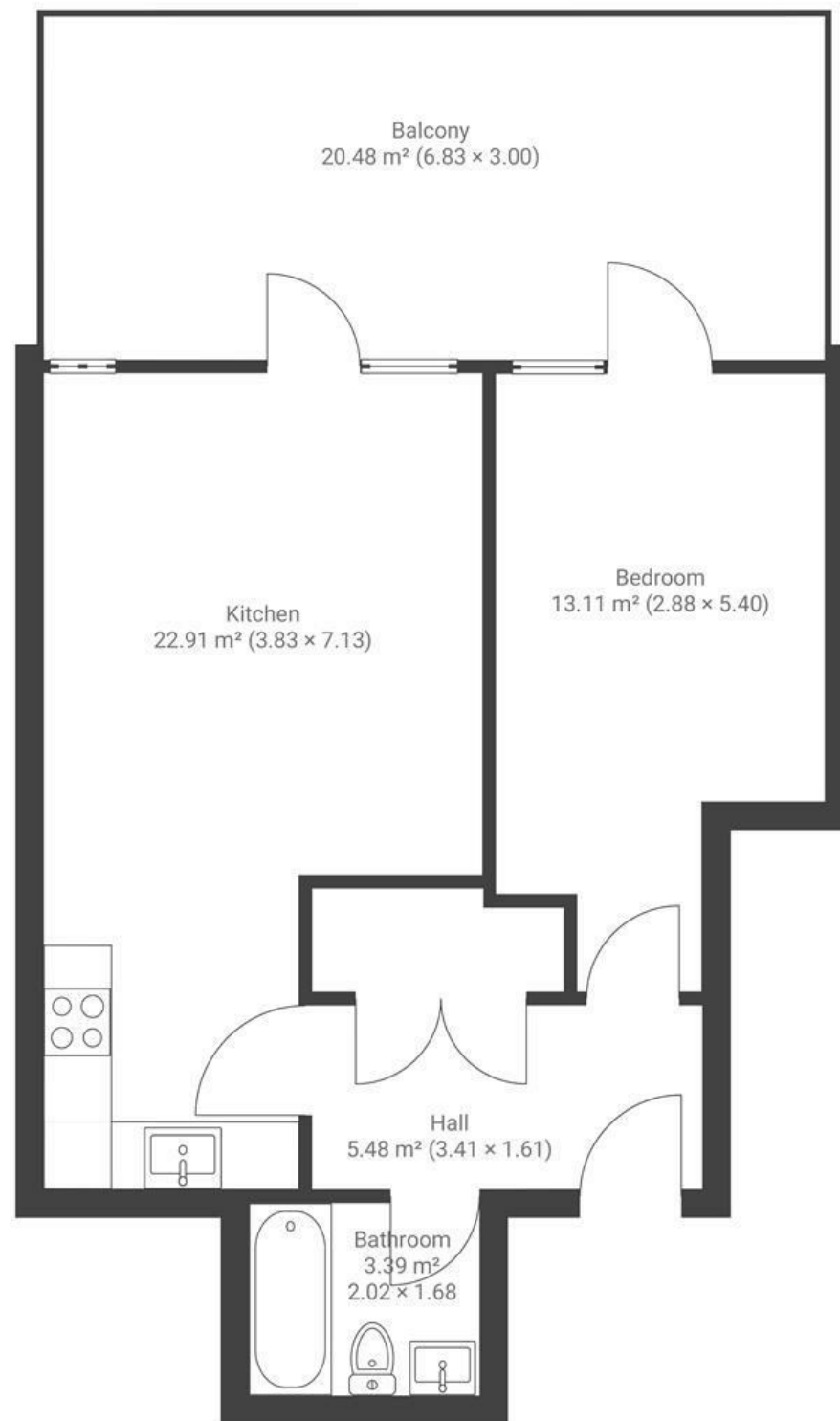


Retort House

HARBOURSIDE

APPROXIMATE FLOOR AREA
47 SQM / 505 SQFT



Boardwalk

Lime Kiln Road

, BRISTOL



£295,000



1 Bedrooms



BS1 5DZ



1 Bathrooms

"We loved the location as it's walking distance to so many food spots, but the highlight was being right on the harbour! I loved being able to run around the harbour on a sunny, Sunday morning. The communal courtyard is also great in the summer, and the terrace (probably the biggest in the building!) is a great place for a barbeque and overlooking the start line of the Bristol Half Marathon each year. The Residence Committee are very good and super keen on making it the best place to live."

