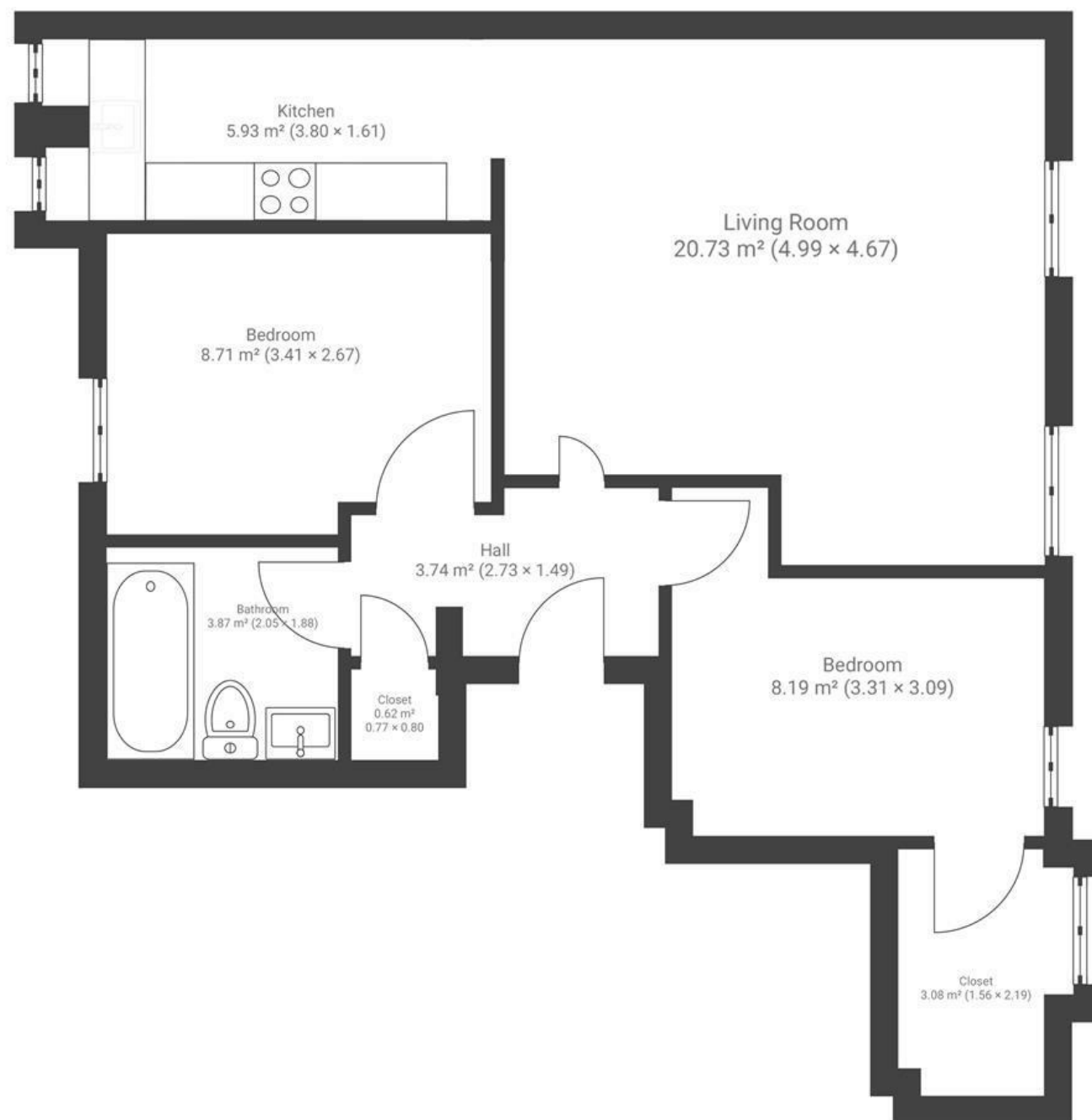


The General

REDCLIFFE

APPROXIMATE FLOOR AREA
55 SQM / 592 SQFT



Boardwalk

Guinea Street , BRISTOL



£340,000



2 Bedrooms



BS1 6SD



1 Bathrooms

"The General is set in a stunning, historic building in an unbeatable location. The apartment itself feels bright, airy, and generously proportioned throughout. With the added benefit of a 24-hour concierge, the development offers a real sense of security and peace of mind, making it a truly comfortable and welcoming place to call home."

