

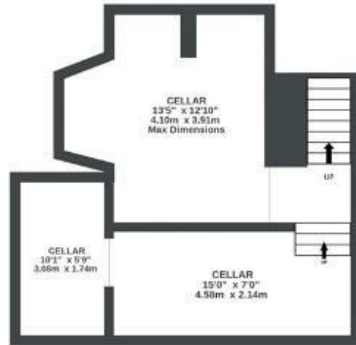
# The Old Vicarage

## BRISLINGTON

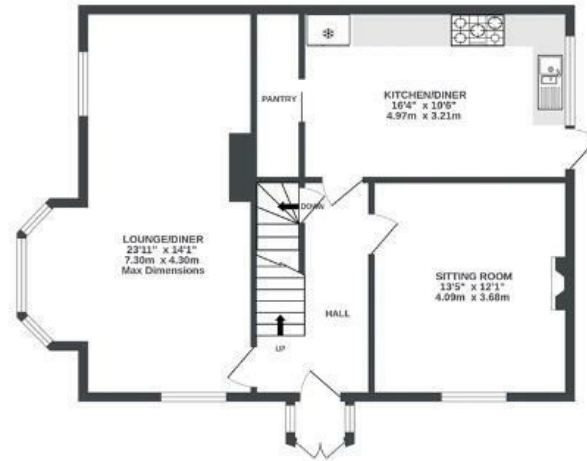
APPROXIMATE FLOOR AREA  
171.1 SQM / 1842 SQFT



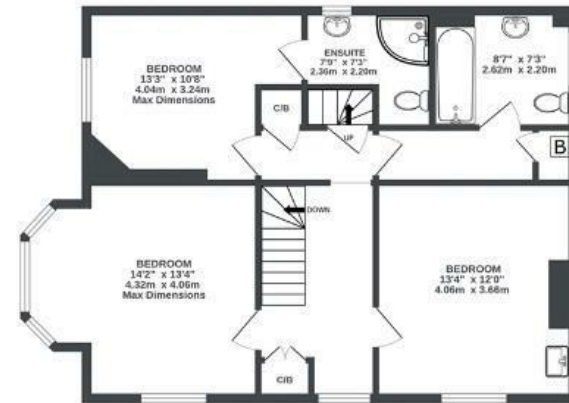
CELLAR (NOT INC IN TOTAL  
SQ.M)  
0 sq.ft. (0.0 sq.m.) approx.



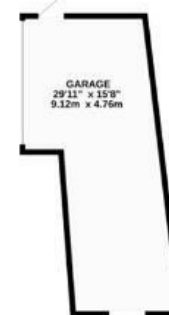
GROUND FLOOR  
741 sq.ft. (68.8 sq.m.) approx.



1ST FLOOR  
723 sq.ft. (67.2 sq.m.) approx.



2ND FLOOR  
357 sq.ft. (33.1 sq.m.) approx.



Illustrations are for reference purposes only, measurements are approximate, not to scale.

**Boardwalk**

# Church Hill

BRISLINGTON, BRISTOL

£

£675,000

zzz

5 Bedrooms



BS4 4LT



2 Bathrooms

*"I've absolutely loved living at The Old Vicarage these last 10 years. It's got that beguiling sense of being in a village location yet is so close to all main amenities and central Bristol. I really love the shops and cafes in Sandy Park Road and never miss a Saturday lunchtime visit to the Deli where the sense of community is wonderful. Another favourite hangout is the taproom at the Hop Union micro brewery in Emery Road, it's a real cosy hidden gem."*

