

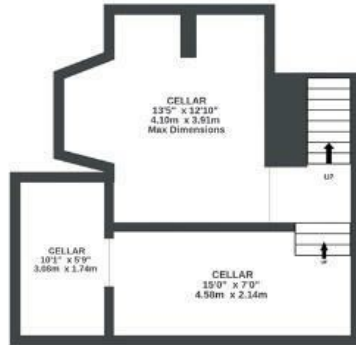
The Old Vicarage

BRISLINGTON

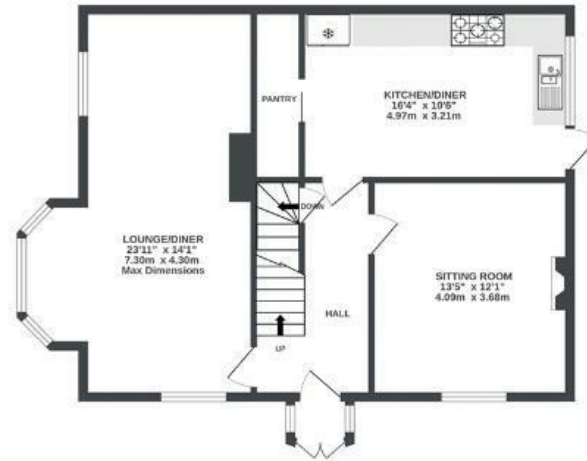
APPROXIMATE FLOOR AREA
171.1 SQM / 1842 SQFT



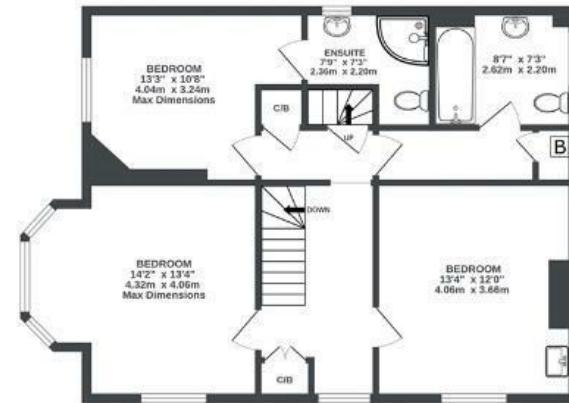
CELLAR (NOT INC IN TOTAL
SQ.M)
0 sq.ft. (0.0 sq.m.) approx.



GROUND FLOOR
741 sq.ft. (68.8 sq.m.) approx.



1ST FLOOR
723 sq.ft. (67.2 sq.m.) approx.



2ND FLOOR
357 sq.ft. (33.1 sq.m.) approx.



Illustrations are for reference purposes only, measurements are approximate, not to scale.

Boardwalk

Church Hill

, BRISTOL

£

£675,000



BS4 4LT

zzz

5 Bedrooms



2 Bathrooms

"I've absolutely loved living at The Old Vicarage these last 10 years. It's got that beguiling sense of being in a village location yet is so close to all main amenities and central Bristol. I really love the shops and cafes in Sandy Park Road and never miss a Saturday lunchtime visit to the Deli where the sense of community is wonderful. Another favourite hangout is the taproom at the Hop Union micro brewery in Emery Road, it's a real cosy hidden gem."

