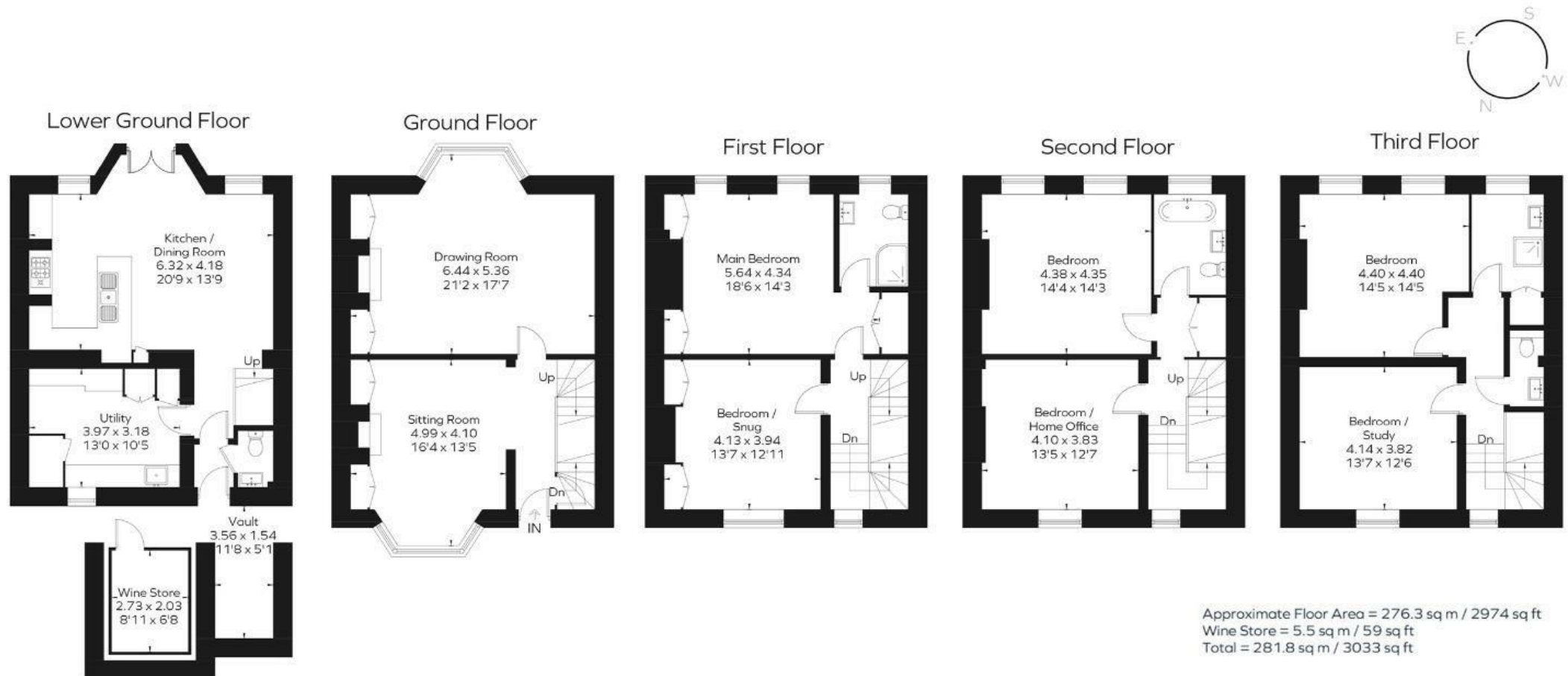


Somerset Street

KINGSDOWN

APPROXIMATE FLOOR AREA
281.8 SQM / 3033 SQFT



Illustrations are for reference purposes only, measurements are approximate, not to scale.

Boardwalk

Somerset Street

KINGSDOWN, BRISTOL



£1,150,000



6 Bedrooms



BS2 8NB



3 Bathrooms

"Our family has loved living in this quiet, friendly street, within easy walking distance of everything the city has to offer. The house has proved effortlessly versatile in adapting to the changing needs of a growing family and the many friends who enjoy coming to stay. We can sit in the sun, in the shelter of our walled garden, enjoying the sense of space as we look out over the city below us, across to the hills beyond."

