

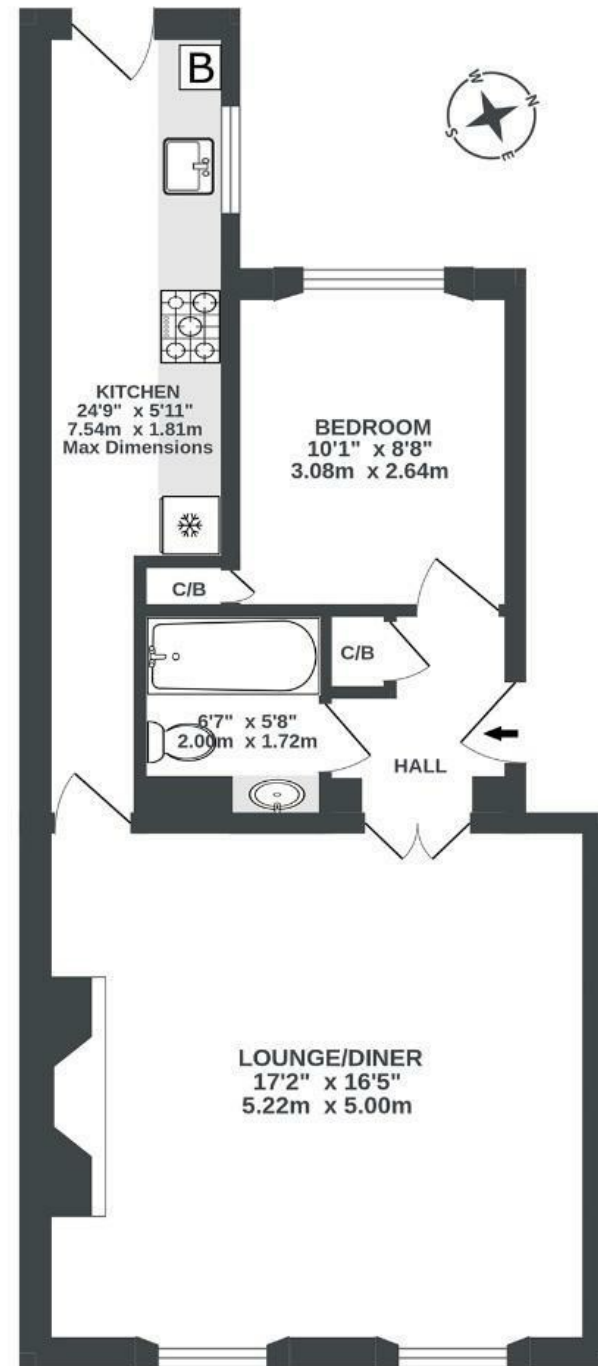
Dowry Square

HOTWELLS

APPROXIMATE FLOOR AREA
51.4 SQM / 553 SQFT



GROUND FLOOR
553 sq.ft. (51.4 sq.m.) approx.



Illustrations are for reference purposes only, measurements are approximate, not to scale.

Boardwalk

Dowry Square

, BRISTOL

£

£325,000



BS8 4SH

zzz

1 Bedrooms



1 Bathrooms

"We fell in love with this flat and the square immediately. Having a morning coffee looking out through the large sash windows onto the square's lovely garden is our favourite time of day, particularly when the magnolia is out. We will miss being able to take a walk down by the water and dropping in for a drink (that usually turns into a meal) at The Pump House or Noah's. We love the charming little cut throughs to Clifton Village – the perfect set up for a lazy breakfast at Mercy."

