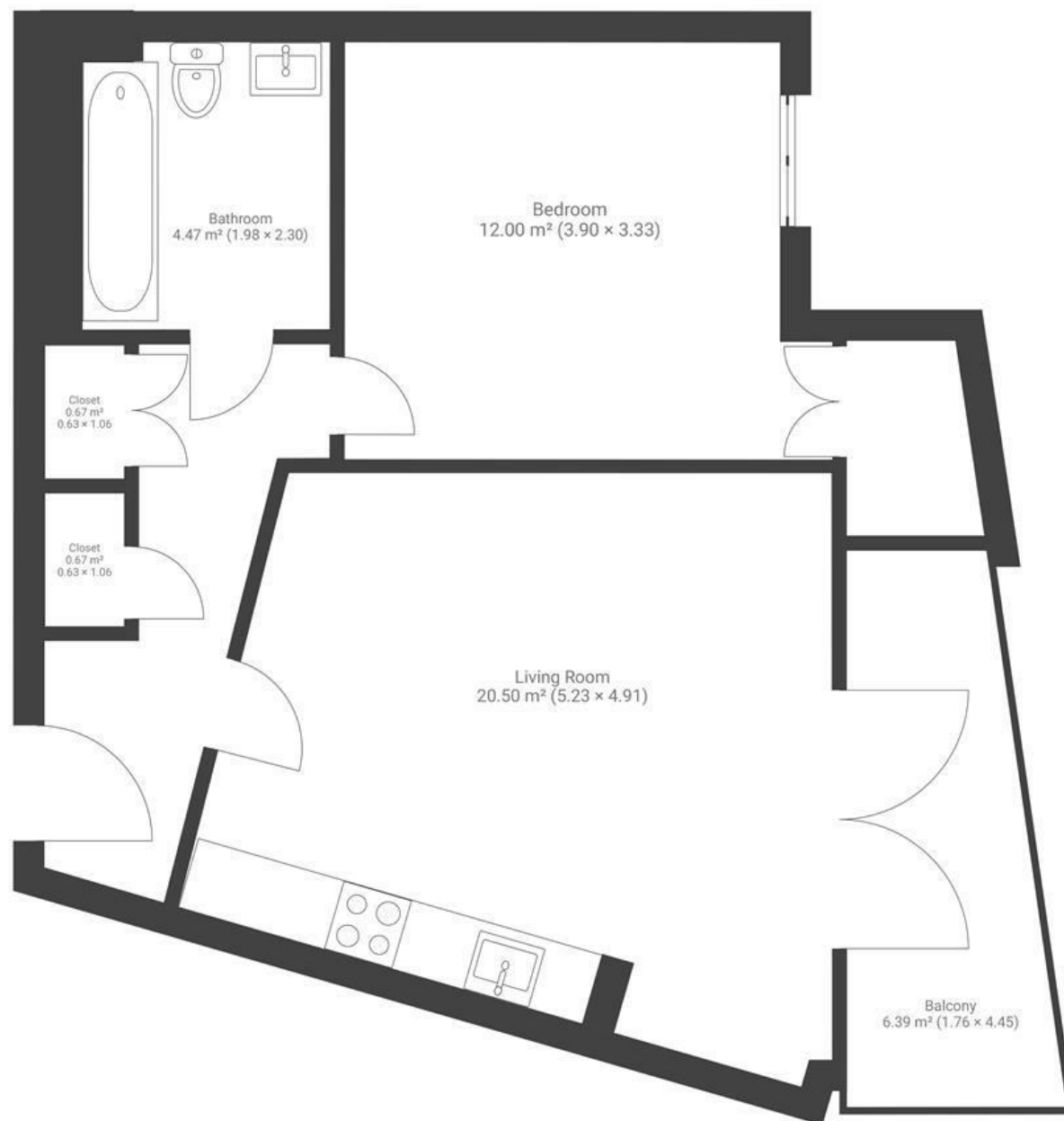


Anchorage

HARBOURSIDE

APPROXIMATE FLOOR AREA
43 SQM / 467 SQFT



Boardwalk

Gaol Ferry Steps

HARBOURSIDE, BRISTOL

£

£315,000



BS1 6UW

z z z

1 Bedrooms



1 Bathrooms

"Anchorage is situated in a highly sought-after and unique location, nestled in the heart of the vibrant Wapping Wharf development surrounded by a variety of amenities (including the best burgers in Bristol!), independent restaurants and shops. You have everything you need on your door step - including a butcher and fishmonger! It is also a stone's throw away from the peaceful, picturesque Harbourside and residential area of Southville (walkable distance to North Street)."

