

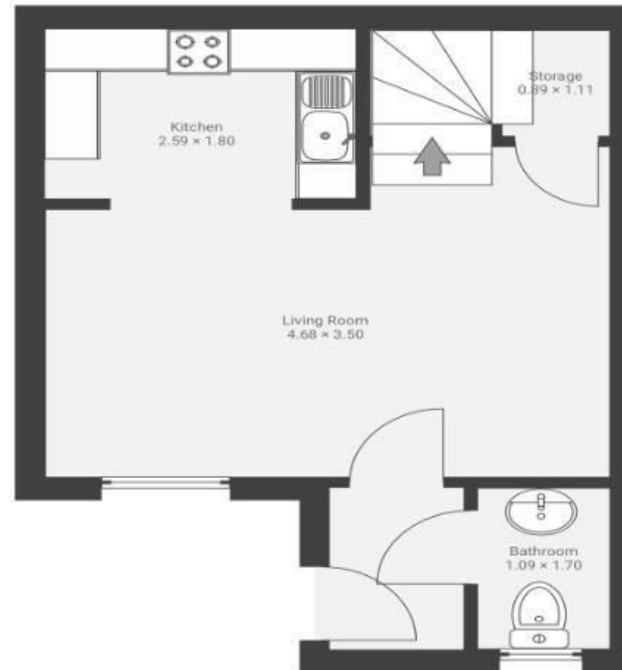
Tarnock Avenue

WHITCHURCH

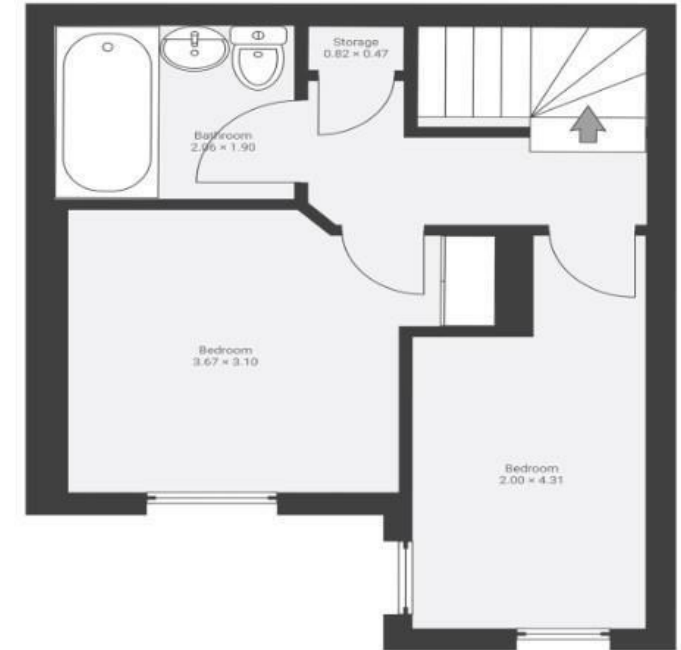
APPROXIMATE FLOOR AREA
55.0 SQM / 592 SQFT



GROUND FLOOR



FIRST FLOOR



Illustrations are for reference purposes only, measurements are approximate, not to scale.

Boardwalk

Tarnock Avenue

, BRISTOL

£

£230,000

zZz

2 Bedrooms



BS14 9RS



2 Bathrooms

"We love our home because it's a calm and comfortable space where we've built special memories together. It's in a lovely area with everything we need nearby, and it's always felt safe and welcoming. It's truly been the perfect place to raise our little one and enjoy family life."

