

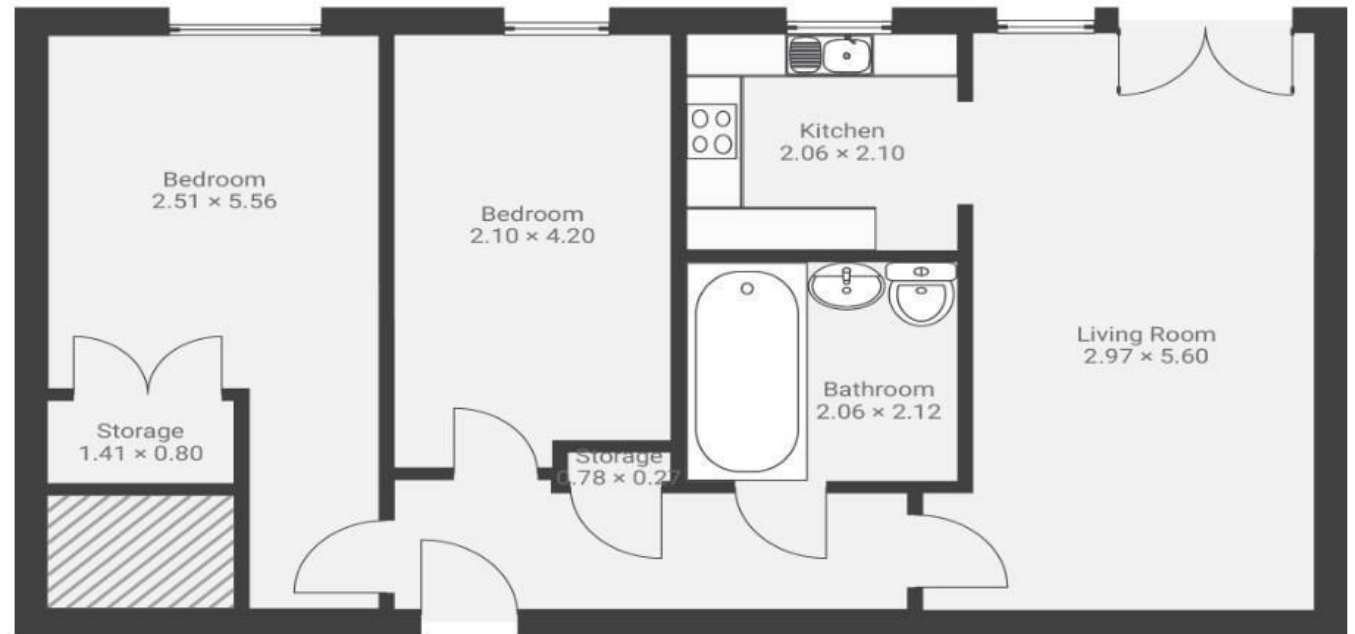
Doudney Court

B E D M I N S T E R

APPROXIMATE FLOOR AREA
59.0 SQM / 635 SQFT



FIRST FLOOR



Illustrations are for reference purposes only, measurements are approximate, not to scale.

Boardwalk

William Street

BEDMINSTER, BRISTOL



£295,000



2 Bedrooms



BS3 4AP



1 Bathrooms

"This flat has been the perfect first home for me, being ideally located close to North Street, the city centre and Temple Meads. I have loved completely redecorating the flat over the last few years, with it now feeling like a light, modern and calming space. Despite being centrally located, the flat is really quiet and gets direct sunlight for most of the day, which makes it really bright and warm. I will very much miss the convenience of the location!"

