

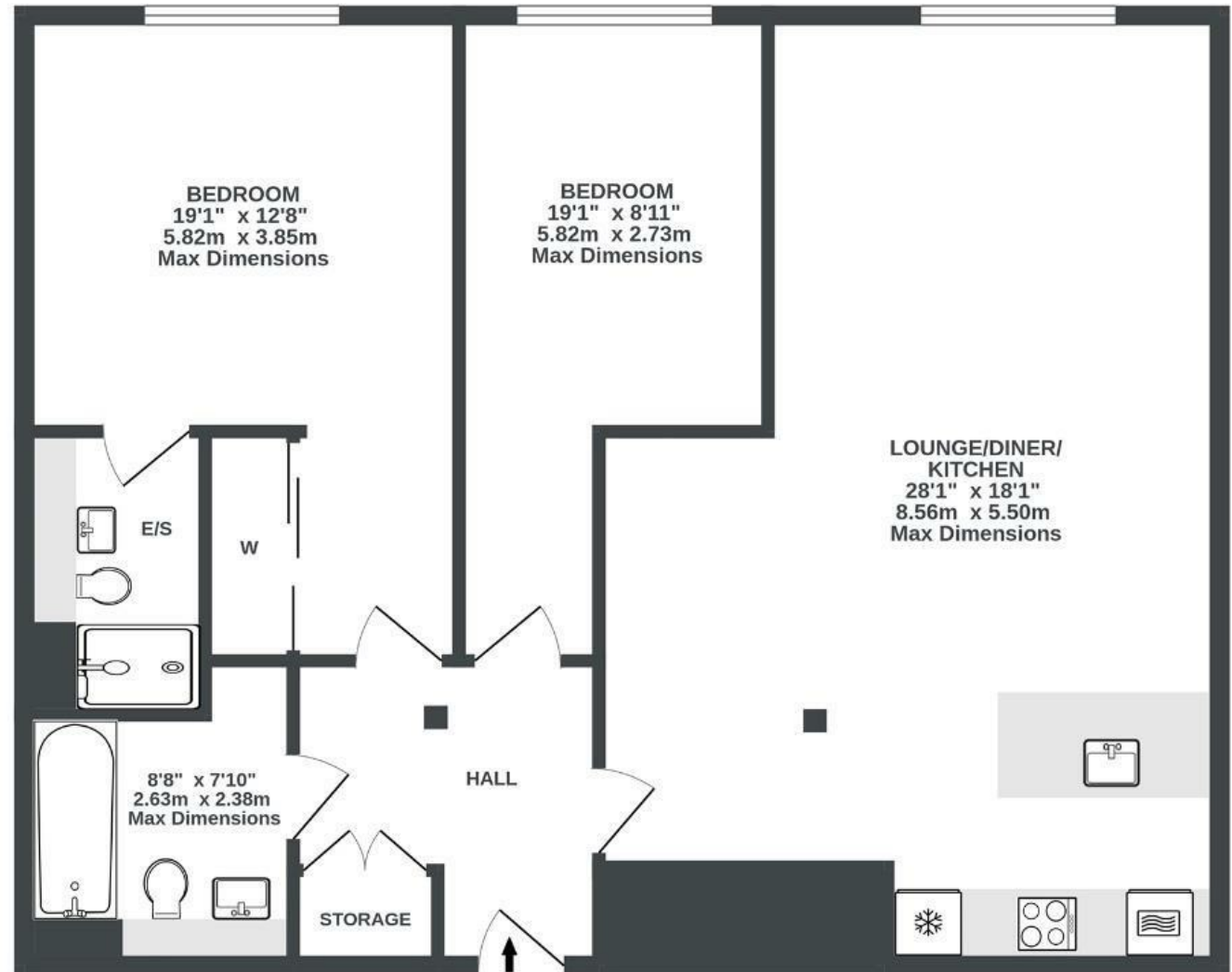
Consort House

B E D M I N S T E R

APPROXIMATE FLOOR AREA
87.7 SQM / 944 SQFT



FIRST FLOOR
944 sq.ft. (87.7 sq.m.) approx.



Illustrations are for reference purposes only, measurements are approximate, not to scale.

Boardwalk

East Street

BEDMINSTER, BRISTOL

£

£415,000

zzz

2 Bedrooms



BS3 1FU



2 Bathrooms

"There is such a great sense of community within the complex, from the freecycle group to Yuki the concierge, who knows everyone by name. We love being such a short walk from the centre of town, as well as being so close to all the great eateries on North street. We'll miss how close the swimming pool is and doing sunset laps of the harbour. The flat speaks for itself: it's warm, light and is delightful to come back to after work. We've loved living here and hope the next owner does too!"

