

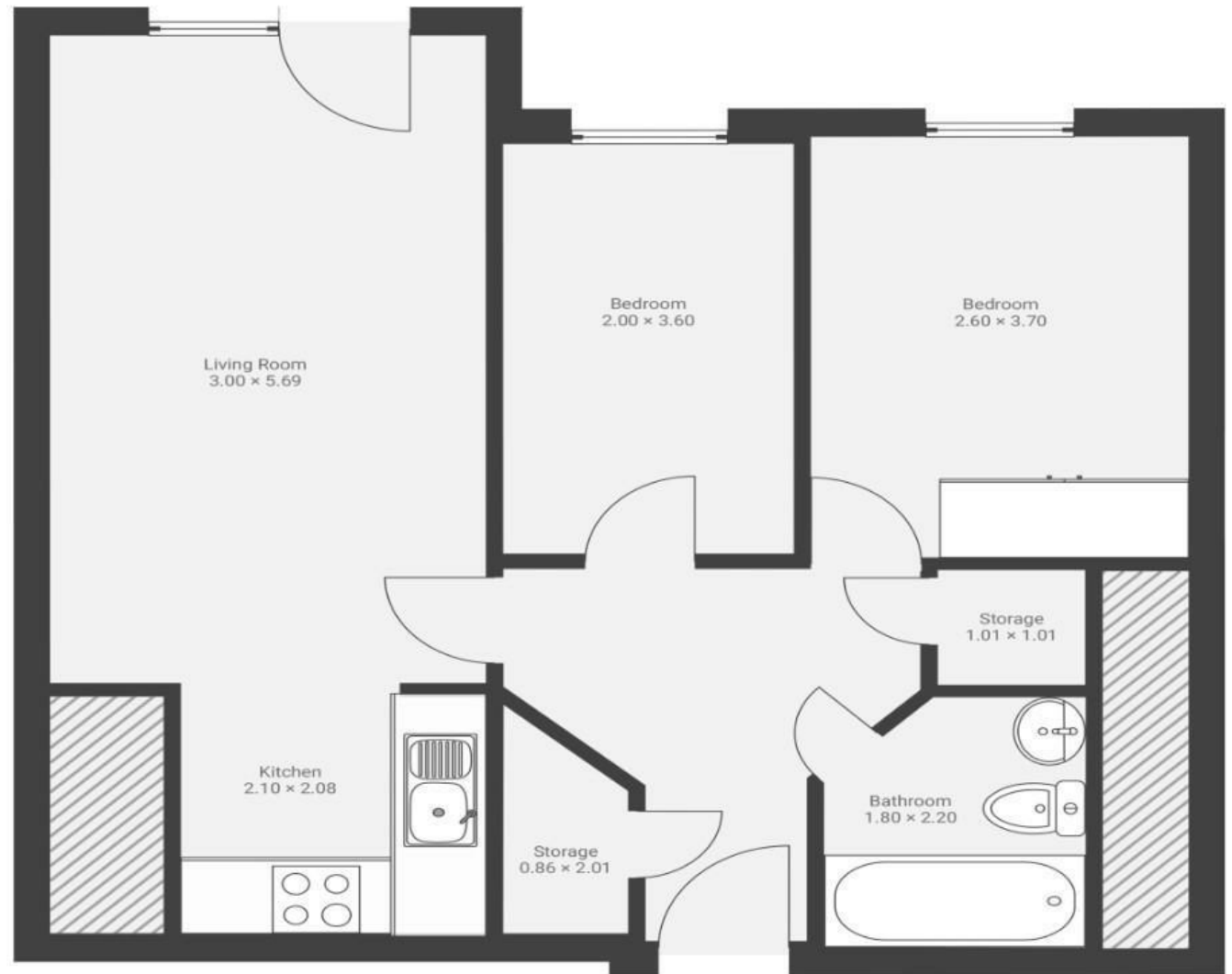
# Squires Court

## BEDMINSTER

APPROXIMATE FLOOR AREA  
62.0 SQM / 667 SQFT



FIRST FLOOR



Illustrations are for reference purposes only, measurements are approximate, not to scale.

**Boardwalk**

# Squires Court , BRISTOL



£285,000



2 Bedrooms



BS3 4BZ



1 Bathrooms

*"We bought our Bedminster flat as it offers a great balance of urban living with a creative edge, green spaces, and has a diverse and active community with a mix of young professionals, families, and creatives. The area has a strong sense of local identity, with regular community events and a growing number of independent businesses."*

