

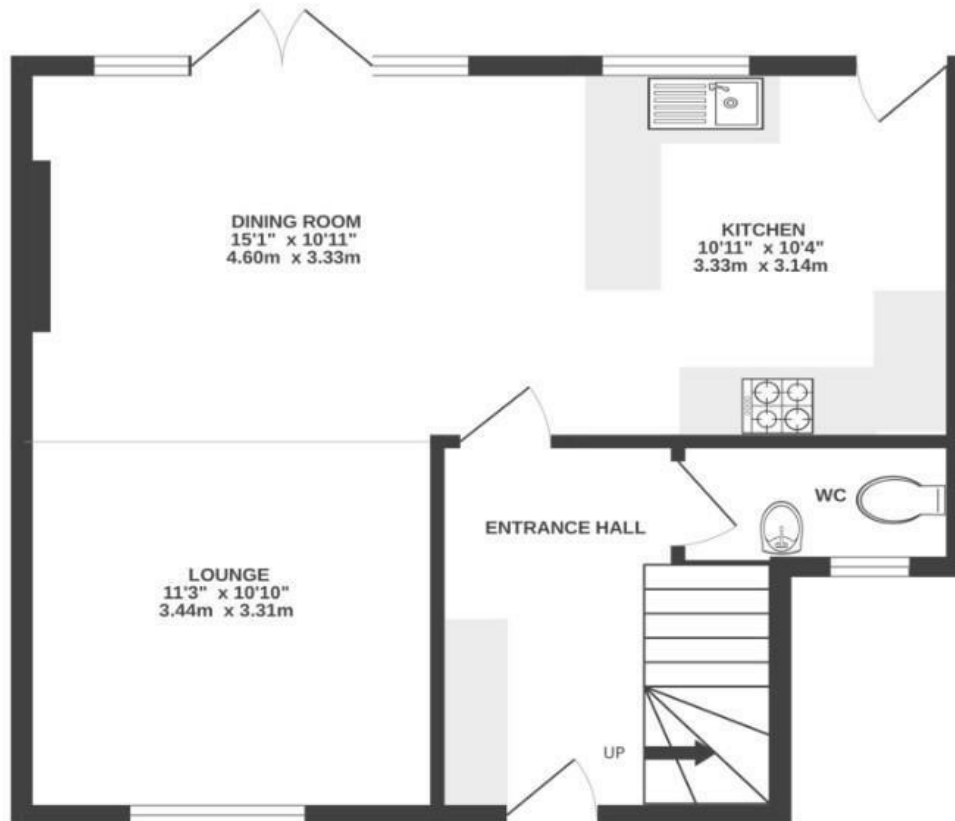
Drake Road

BEDMINSTER

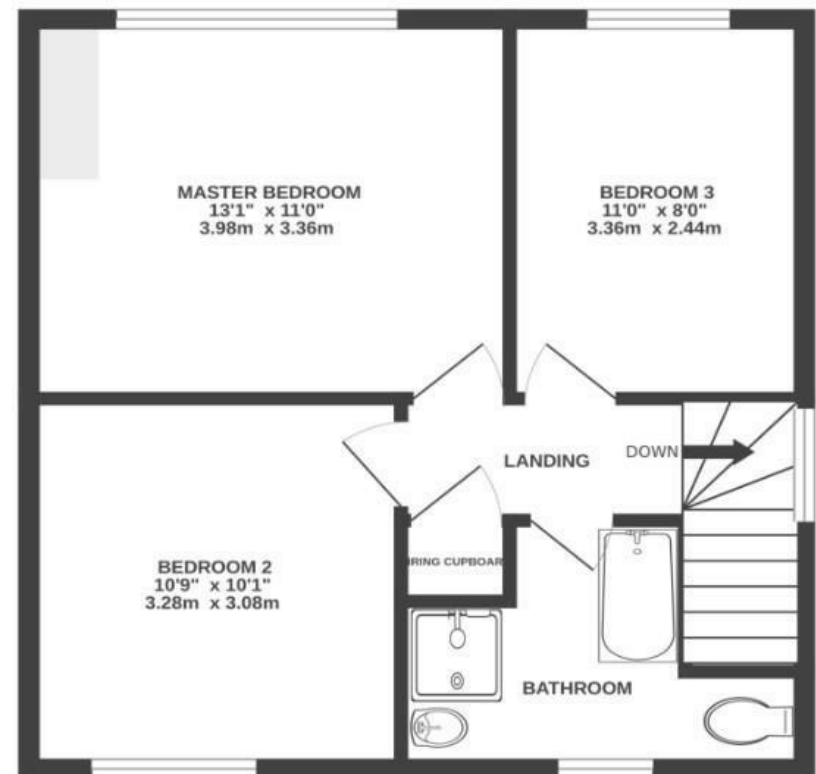
APPROXIMATE FLOOR AREA
94.0 SQM / 1011 SQFT



GROUND FLOOR



FIRST FLOOR



Boardwalk

Drake Road

, BRISTOL

£

£560,000

zzz

3 Bedrooms



BS3 2AS



2 Bathrooms

"We have absolutely loved living here—both the house and location are amazing. BS3 is a vibrant and exciting place to be, with so much going on right on your doorstep. A two-minute walk from North Street, where there's a mix of independent shops, bakeries, tap rooms, and even Michelin Good Food Guide restaurants. Beyond that, you're only a 30 minute walk from the city centre, Clifton, and some incredible 5K running routes around the harbour and Ashton Court. You honestly can't beat it!"

