

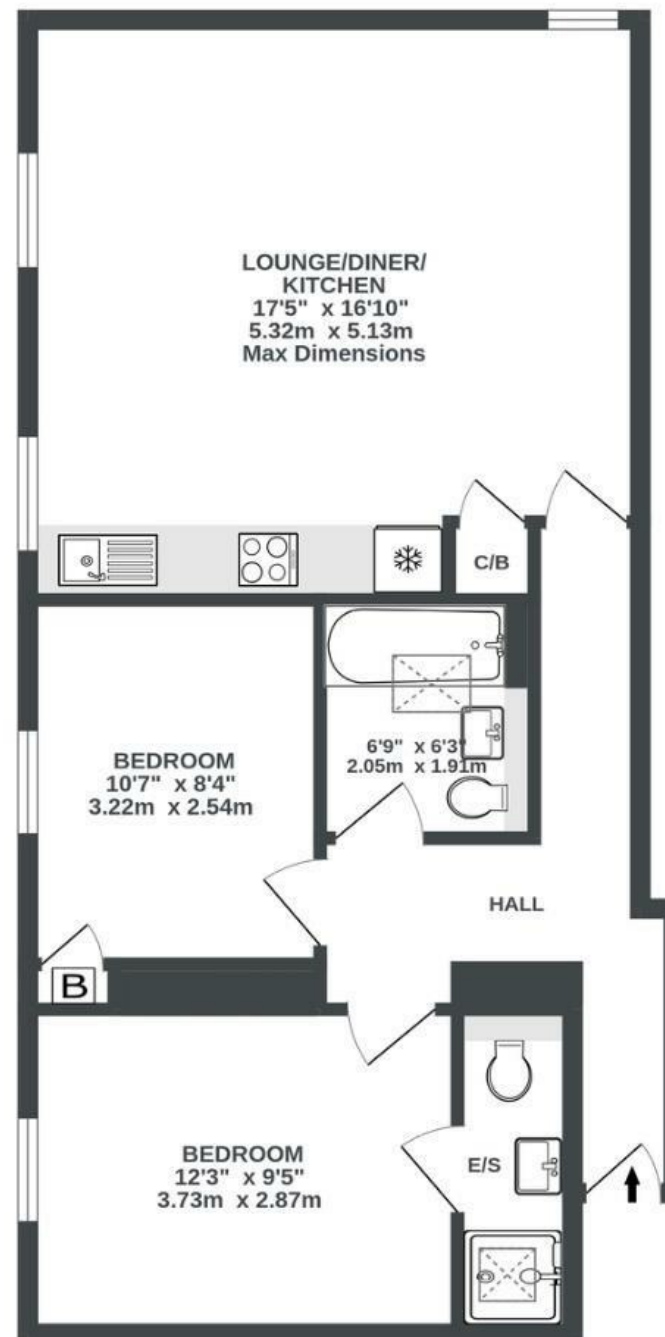
# Windmill Hill

## VICTORIA PARK

APPROXIMATE FLOOR AREA  
60.5 SQM / 651 SQFT



FIRST FLOOR  
651 sq.ft. (60.5 sq.m.) approx.



Illustrations are for reference purposes only, measurements are approximate, not to scale.

**Boardwalk**

# Windmill Hill

, BRISTOL

£

£290,000



BS3 4LU

zzz

2 Bedrooms



2 Bathrooms

*"This was my first property and will always hold special memories for me. The open plan kitchen/diner/living room has been such a great space for entertaining and cooking with friends round, over a few beers or glasses of wine. The area is amazing as well – it's so vibrant and literally everything you need is within 20 minutes walk. Great gyms, pubs, restaurants, parks and shops are all within walking distance. It really is the best of Bristol"*

