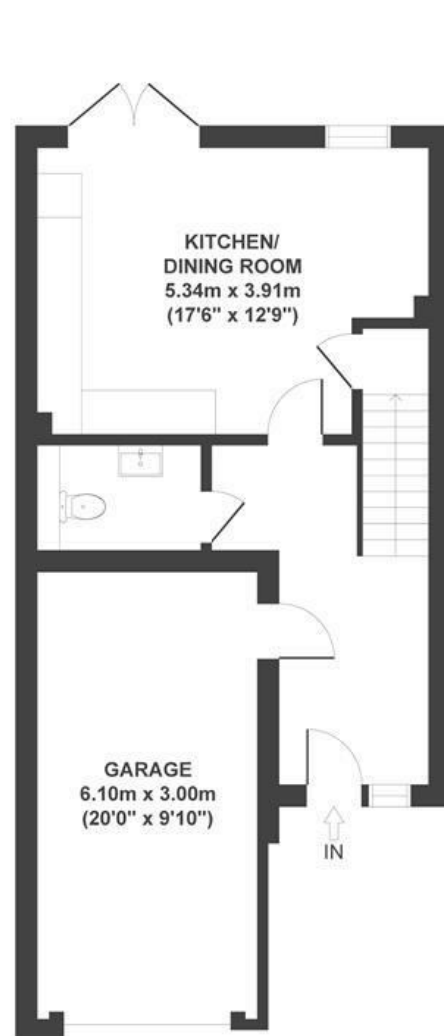


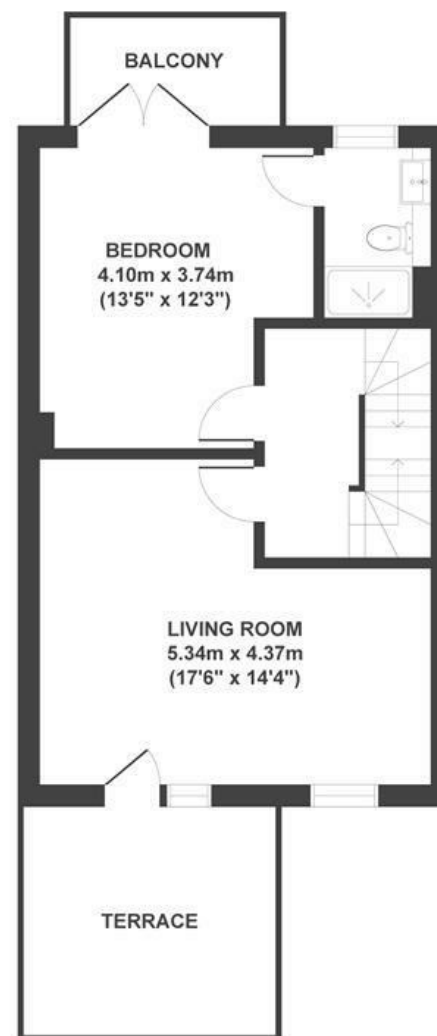
# Bruce Cole Lane

## GREENBANK

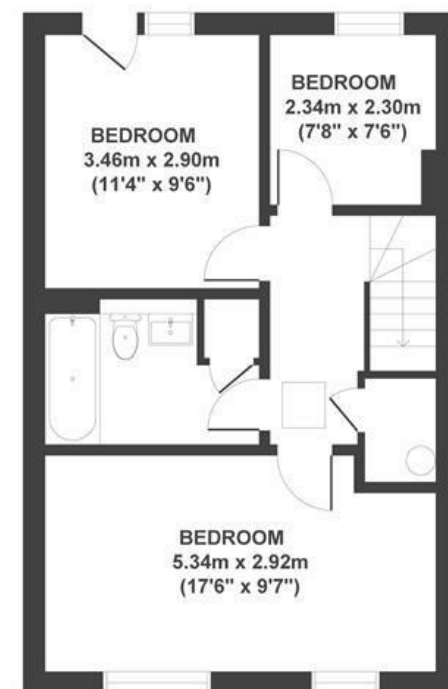
APPROXIMATE FLOOR AREA  
148 SQM / 1593 SQFT



GROUND FLOOR



FIRST FLOOR



SECOND FLOOR

**Boardwalk**

# Bruce Cole Lane

GREENBANK, BRISTOL



£550,000



4 Bedrooms



BS5 6FN



3 Bathrooms

*"We're obsessed with this home. My wife walks to town daily along the cycle path, while our puppy watches (and sometimes barks!) from the terrace as leaves rustle by. The neighbours are a true community, with a WhatsApp group. We were amazed at the energy-efficiency — the most affordable place we've lived. Even in winter, it never gets cold. We'd never leave... but family calls us to London. We hope its next owners love it as much as we do."*

