

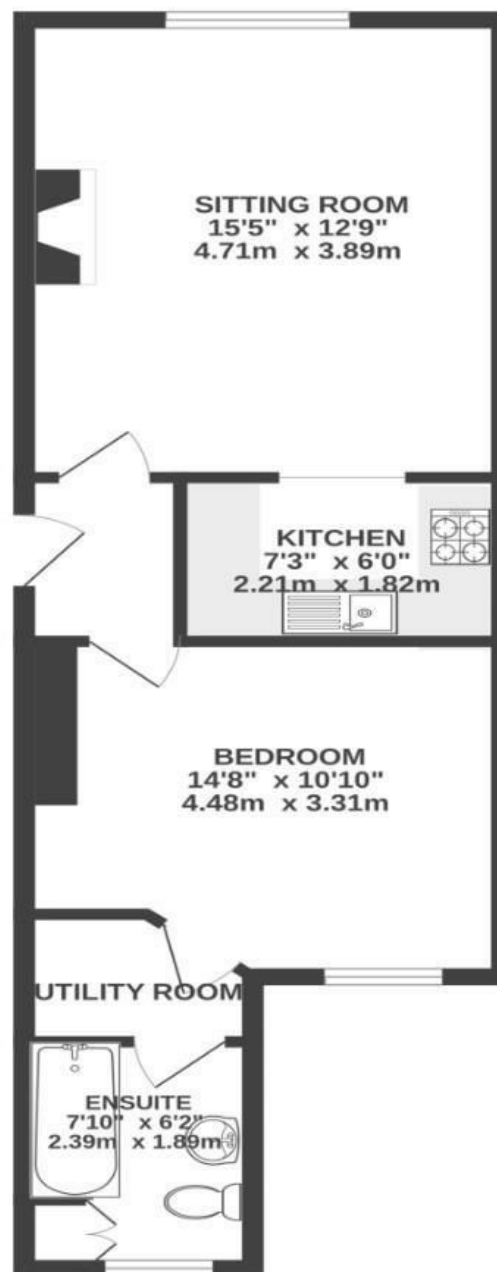
Southleigh Road

CLIFTON

APPROXIMATE FLOOR AREA
59.0 SQM / 548 SQFT



GROUND FLOOR



Illustrations are for reference purposes only, measurements are approximate, not to scale.

Boardwalk

Southleigh Road

CLIFTON, BRISTOL

£

£325,000



BS8 2BQ

zZz

1 Bedrooms



1 Bathrooms

"We have loved living on Southleigh Road and will be sad to leave! It's perfectly placed between some amazing areas of Bristol- Clifton village, Whiteladies and Cotham Hill. We love wandering up to the village for a morning coffee or over to Cotham Hill where there are several impressive restaurants. It is just a few meters from the Lido which is a fabulous place to swim, eat or impress visitors! Despite its proximity to all of these vibrant places, the street has a relaxed and quiet feel to it."

