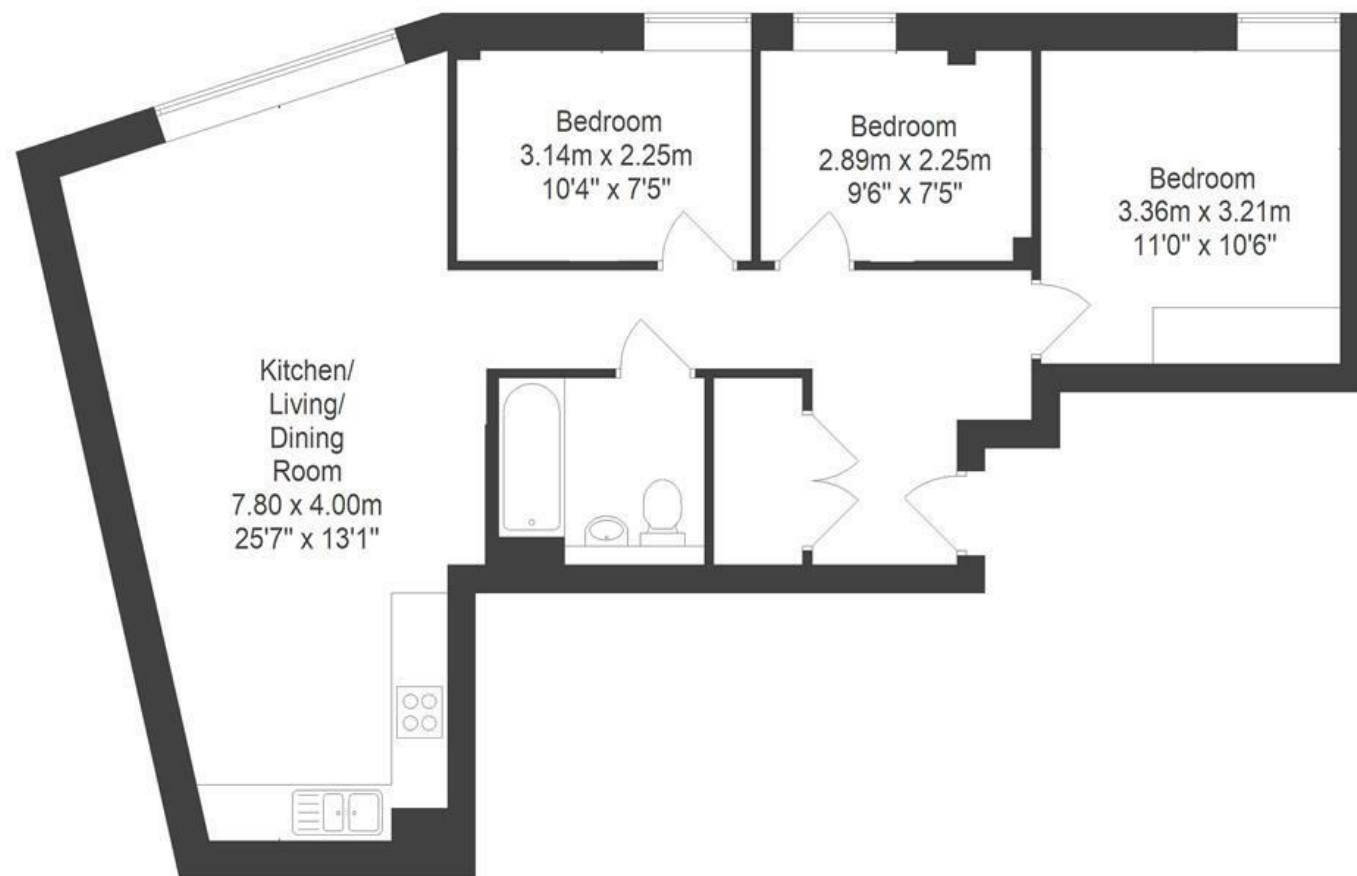


Anderson House

STOKES CROFT

APPROXIMATE FLOOR AREA
70.8 SQM / 762 SQFT



~~Boardwalk~~

Anderson House

MONTPELIER, BRISTOL



£350,000



3 Bedrooms



BS1 3FE



1 Bathrooms

"I've really enjoyed living here! The location is amazing, situated close to independent cafés, bars and restaurants but the flat is so peaceful and quiet on the inside. I love the views over the city, especially during sunrise. There's also lots of space, particularly in the living/dining room, you don't feel cramped like I've found in other people's flats. It's great when guests to walk in and say "Wow this is nice!"."

