

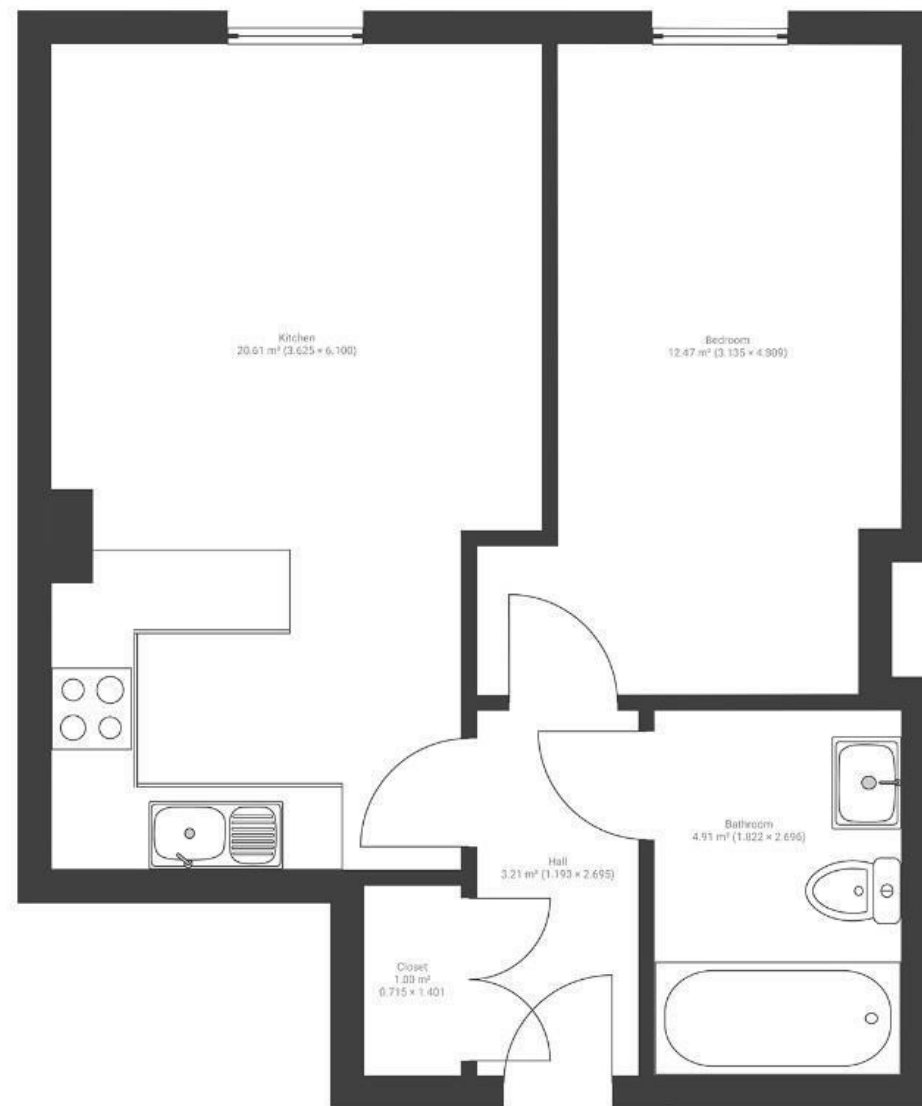
Tobacco Store

BEDMINSTER

APPROXIMATE FLOOR AREA
47 SQM / 505 SQFT



GROUND FLOOR



Boardwalk

St. Johns Road

SOUTHVILLE, BRISTOL



£250,000



1 Bedrooms



BS3 1FN



1 Bathrooms

"I have loved living in this flat. It was the perfect first home, offering convenience, comfort, and security. Whether it's been hosting cocktail nights or watching sport on the big screen with friends, enjoying slow mornings with coffee at the breakfast bar, or taking walks through Victoria Park just minutes away, this place has truly been a wonderful home."

