

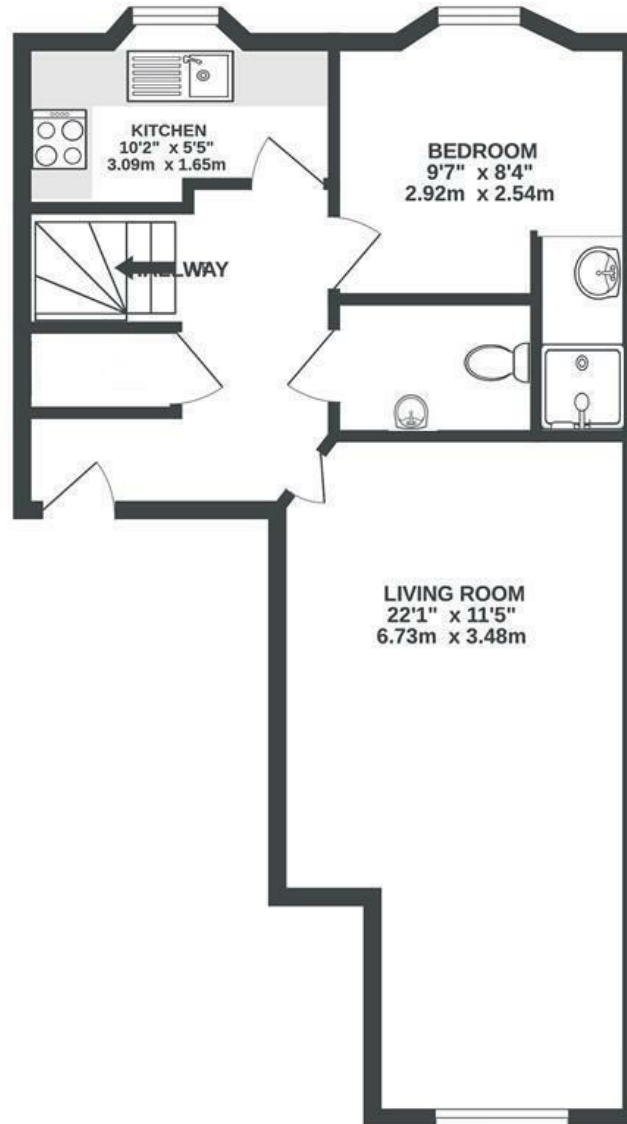
# Muller House

## ASHLEY DOWN

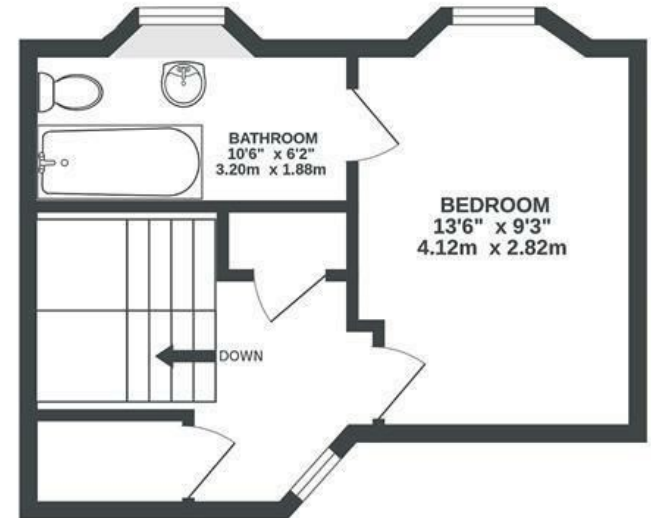
APPROXIMATE FLOOR AREA  
73.2 SQM / 788 SQFT



GROUND FLOOR



1ST FLOOR



**Boardwalk**

# Pople Walk

, BRISTOL

£

£325,000



BS7 9DB

zzz

2 Bedrooms



2 Bathrooms

*"Muller House has been our much loved home for 6 years. There is a great neighbourly spirit and being so close to lots of green space was a must for our dog Elsa. Having Gloucester Road so close by and the luxury of parking makes a massive difference to us and has truly made this a perfect first home. We've shared our home with friends and family who love walking to Gloucester Road for something to eat and drink. Our spare room has also been popular to Air BnB."*

