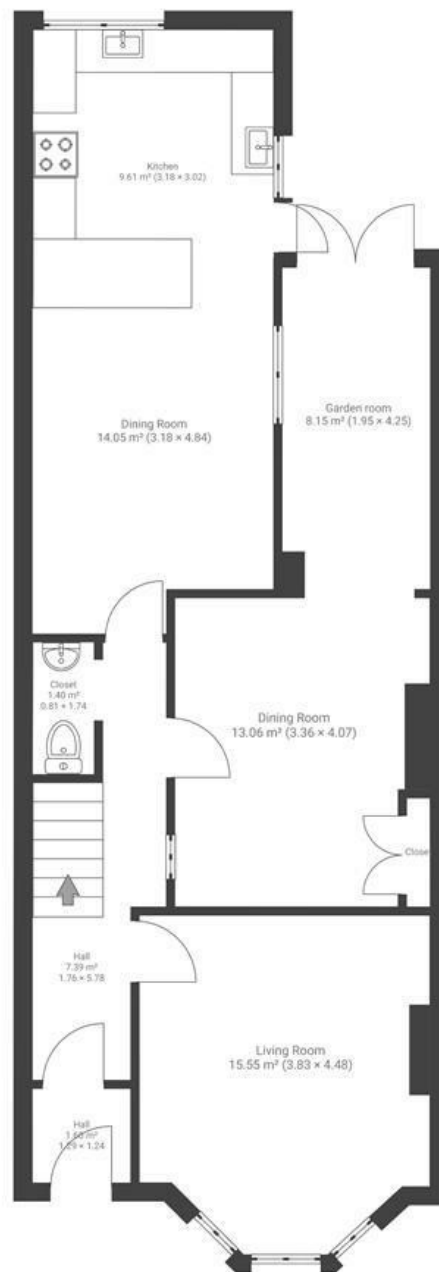


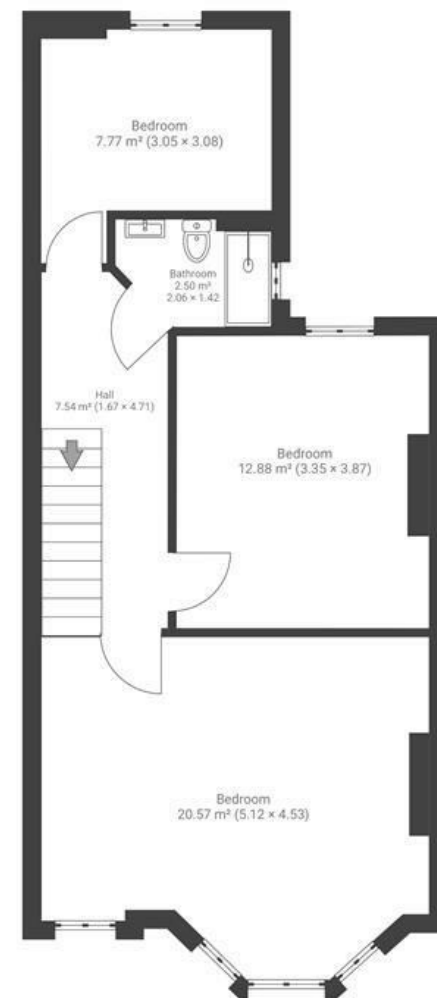
Monk Road

BISHOPSTON

APPROXIMATE FLOOR AREA
122 SQM / 1313 SQFT



GROUND FLOOR



FIRST FLOOR

Boardwalk

Monk Road

BISHOPSTON, BRISTOL



£635,000



3 Bedrooms



BS7 8NE



2 Bathrooms

"Monk Road has an amazing community feel. From the yearly street parties with live music & children playing in the street, to the carolling at Christmas. Quietly nestled away next to the allotments but just five minutes from Gloucester Road. The Bishop Road playground entrance is on Monk Road making school pickups nice and easy. We have great storage with the garden outbuilding and lots of easily accessible space for bikes in the lock-up at the front. Our direct neighbours are also the loveliest in Bristol!"

