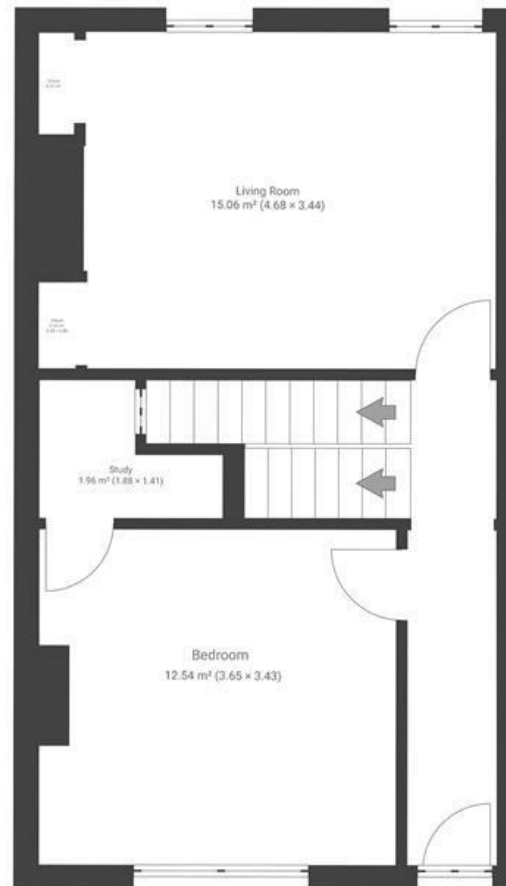


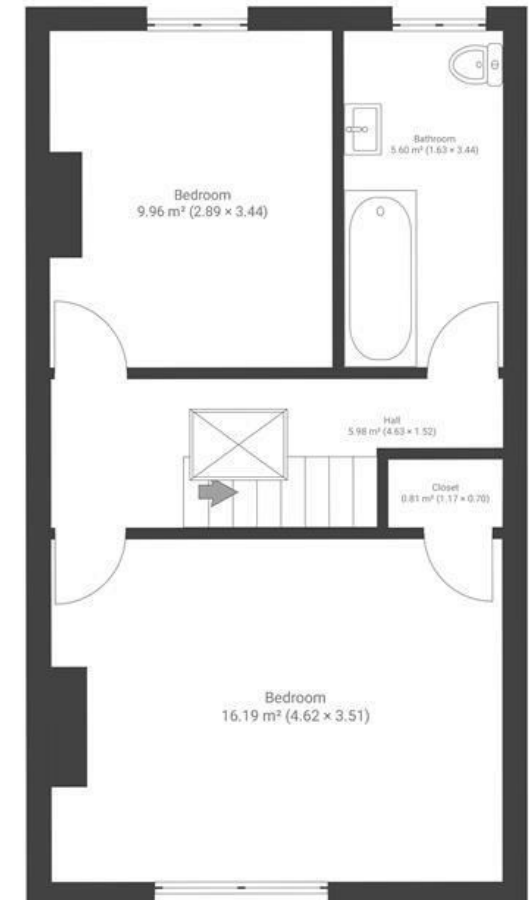
# Gwilliam Street

## BEDMINSTER

APPROXIMATE FLOOR AREA  
103 SQM / 1108 SQFT



GROUND FLOOR



FIRST FLOOR

**Boardwalk**

# Gwilliam Street

WINDMILL HILL, BRISTOL



£460,000



3 Bedrooms



BS3 4LT



1 Bathrooms

*"We love the character of our home on Gwilliam Street with its spacious views across Bristol, its sociable basement kitchen, and its airy garden. We were drawn to Windmill Hill by its friendly and creative community, which regularly hosts events like Art on the Hill. We liked the quiet, laid back feel and how well connected it is. Bedminster Train Station at the end of the road, the green expanse of Victoria Park and Windmill Hilly City Farm are just five minutes away."*

