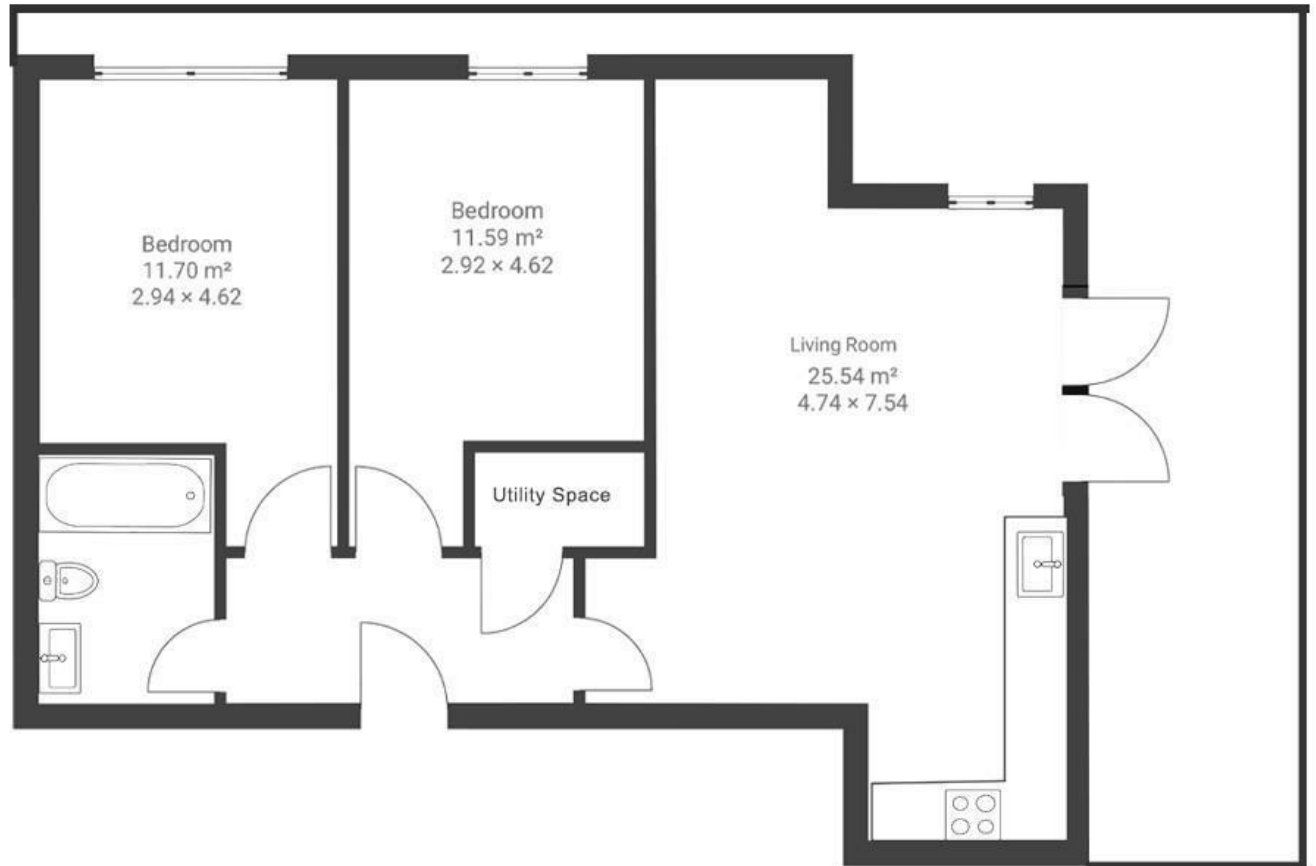


# Kings Quarter Apartments

STOKES CROFT

APPROXIMATE FLOOR AREA  
62.2 SQM / 669 SQFT



**Boardwalk**

# 15 King Square

, BRISTOL



£365,000



2 Bedrooms



BS2 8HP



1 Bathrooms

*"Our flat in Kings Quarter is in easy reach of the best of everything Stokes Croft and the city centre has to offer, while at the same time being a peaceful haven at the top of the building where we can escape the hustle and bustle of the city. We love going to Crafty Egg on Gloucester Road for a weekend brunch or Nadu for cocktails and Indian food in the evening. We'll miss sitting on our patio looking out over the city with a morning coffee or spending a chic evening with friends drinking prosecco in the summer!"*

