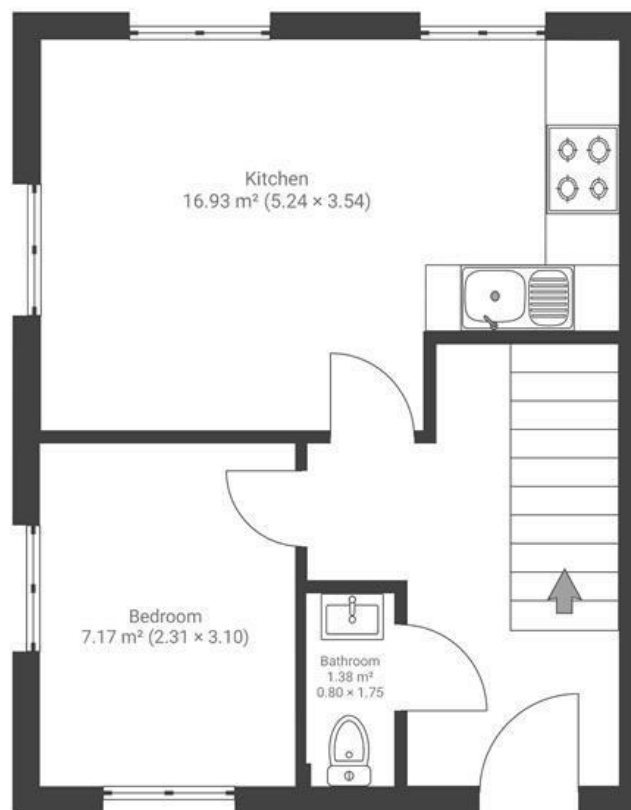


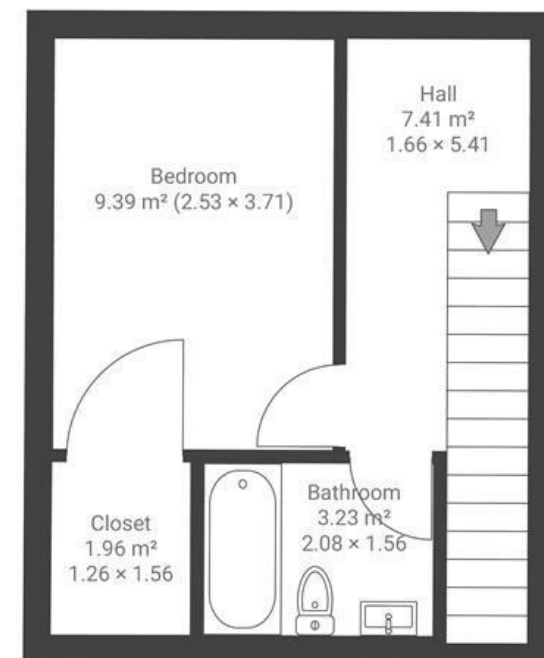
# Loft House

## ASHLEY DOWN

APPROXIMATE FLOOR AREA  
59 SQM / 635 SQFT



GROUND FLOOR



FIRST FLOOR

**Boardwalk**

# College Road

ASHLEY DOWN, BRISTOL



£315,000



2 Bedrooms



BS7 9FG



2 Bathrooms

*"We love our home for so many reasons. It's in a fantastic residential area, just a short walk from Gloucester Road's vibrant amenities. Our favourite cafés, Lonely Mouth and Guild of Dough, are on our doorstep, and the nearby Co-op is a lifesaver for last-minute baking or beer runs. We're lucky to have Durak Park, Purdown, and St. Andrews Park for summer walks with our pup. Our peaceful communal garden, with private access, feels like our own, and our home blends Grade II charm with modern design."*

