

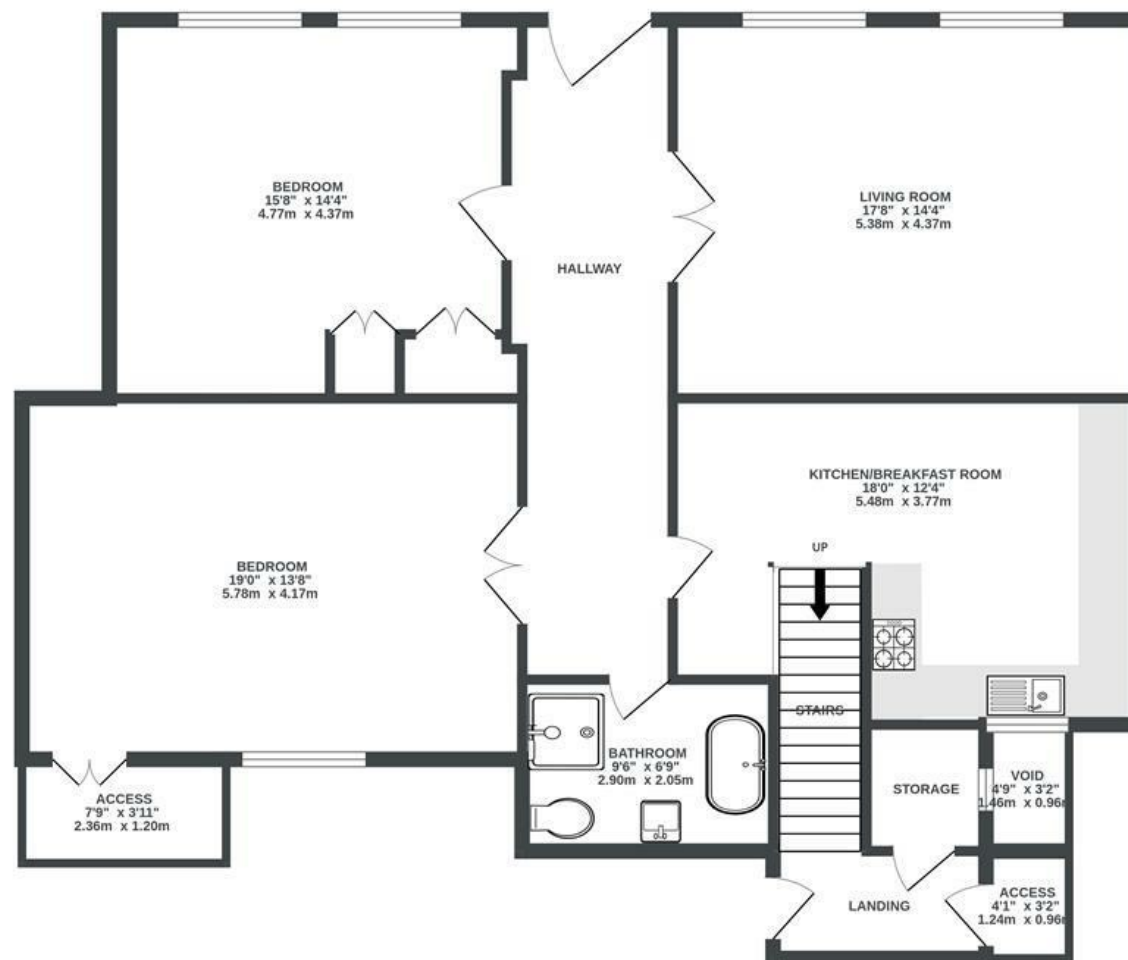
# Dowry Square

## CLIFTON

APPROXIMATE FLOOR AREA  
113.8 SQM / 1225 SQFT



LOWER GROUND FLOOR



Boardwalk

# Dowry Square

, BRISTOL

£

£425,000



BS8 4SH

zzz

2 Bedrooms



1 Bathrooms

*"When I moved here the property was a blank canvas. I've enjoyed being able to transform the space with engineered oak flooring throughout, and to consider how the space is used. The wardrobes in the master bedroom and cabinets in the lounge were made on site by a local carpenter - the oak sideboard top in the lounge was reclaimed from an estate in Somerset and took some manoeuvring into position but I love how it fits into the space so perfectly. The cast iron radiators were added at the same time, and although weigh an absolute ton, were a non negotiable when it came to renovating the property and I'm thrilled with how fitting they feel for a property of this generation. Having the choice between the little private terrace (when I've left enough space to sit and not just filled it with plants!) or the wonderful communal garden for a glass of wine in the summer has been fantastic! I love that Clifton Village is directly behind the flat, and the harbourside is two minute walk away in the other direction."*

