

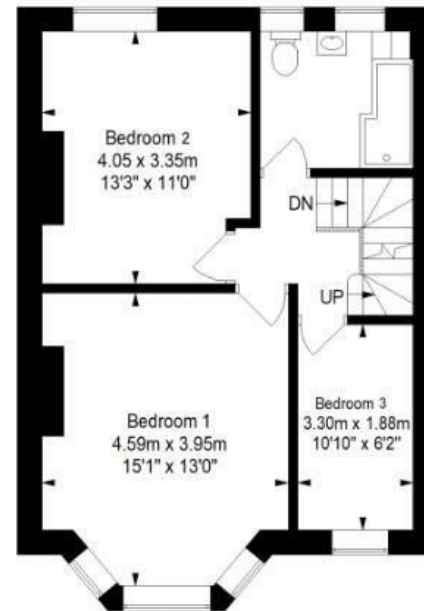
Redcatch Road

KNOWLE

APPROXIMATE FLOOR AREA
148.4 SQM / 1597.4 SQFT



FIRST FLOOR



SECOND FLOOR



= Reduced headroom below 1.5m / 5'0"

Boardwalk

Redcatch Road

, BRISTOL



£725,000



5 Bedrooms



BS4 2EY



3 Bathrooms

"We've loved our time on Redcatch road - our lovely neighbours, birdsong in the garden and the beautiful Redcatch community park over the road with great coffee and a lovely place to meet friends. Our favourite park in Bristol is right on the doorstep too - Perrett Park - with views over the city to Clifton and Ashton. The perfect viewpoint for the Balloon festival! A convenient 10min walk into lovely Totterdown where there's more community pubs, cafes and restaurants. We've loved every minute."

