

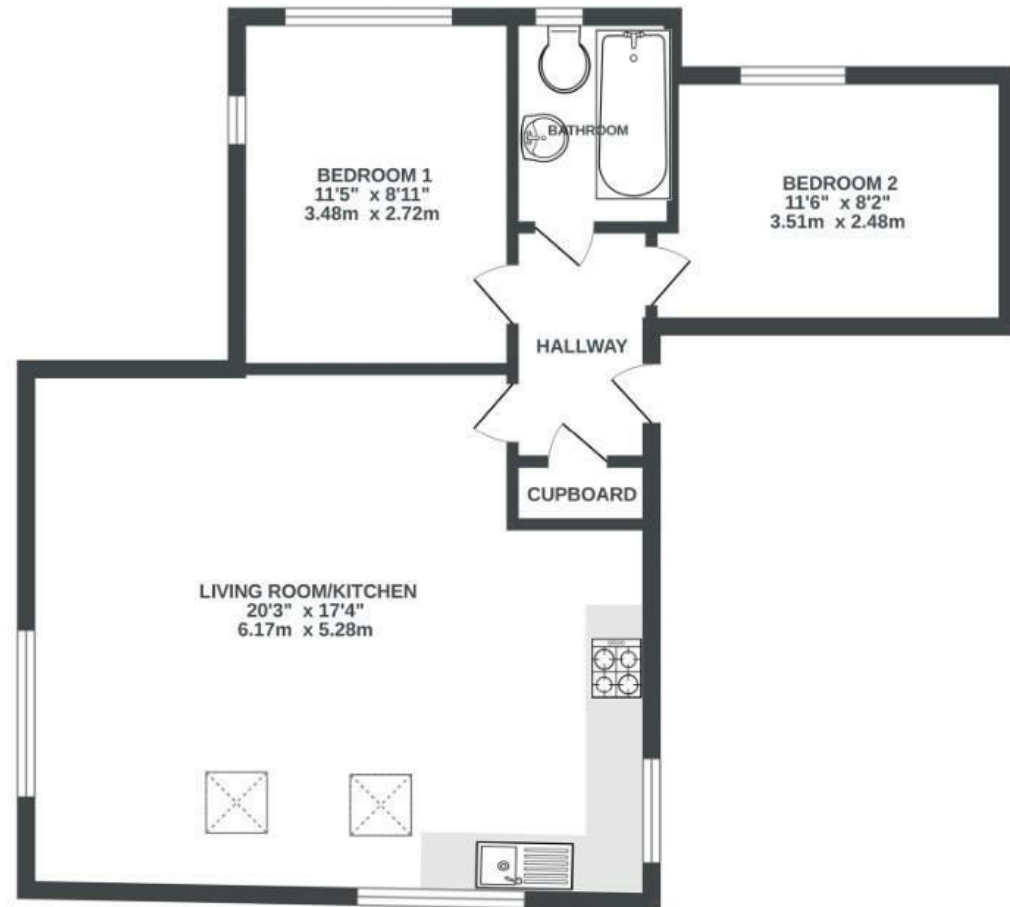
# North View

## WESTBURY PARK

APPROXIMATE FLOOR AREA  
62.0 SQM / 667 SQFT



### FIFTH FLOOR



Illustrations are for reference purposes only, measurements are approximate, not to scale.

**Boardwalk**

# North View

WESTBURY PARK, BRISTOL



£315,000



2 Bedrooms



BS6 7PT



1 Bathrooms

*"The location of my flat is perfect for me being close to The Downs. It is very quiet and peaceful, the flat gets a lot of natural light. North View has two lovely restaurants, a butchers, fish mongers, Waitrose, gym and even a cinema within a five minute walk away so local amenities are fantastic too."*

