

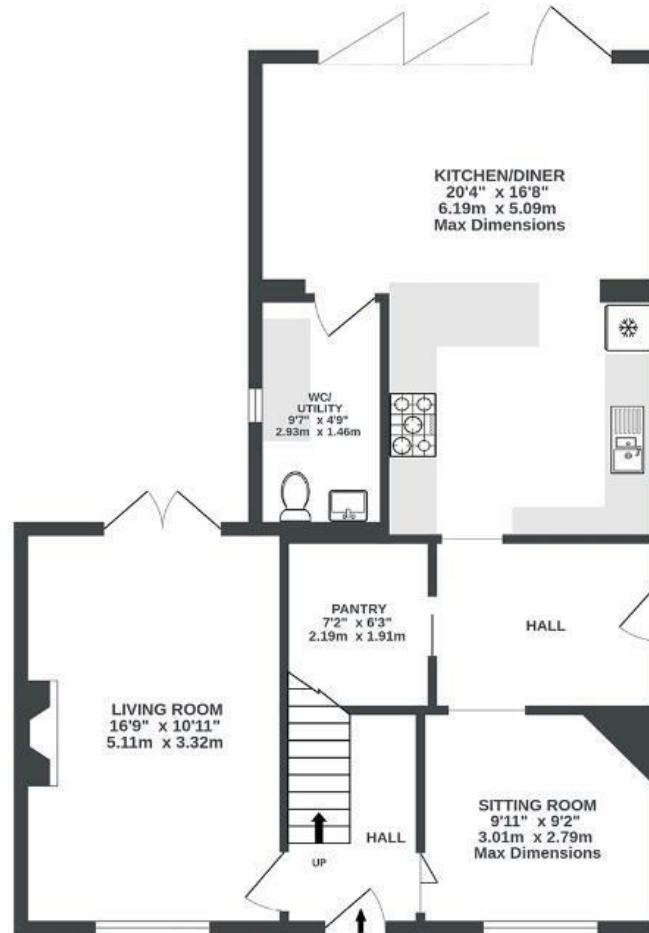
Bushy Thorn Road

CHEW STOKE

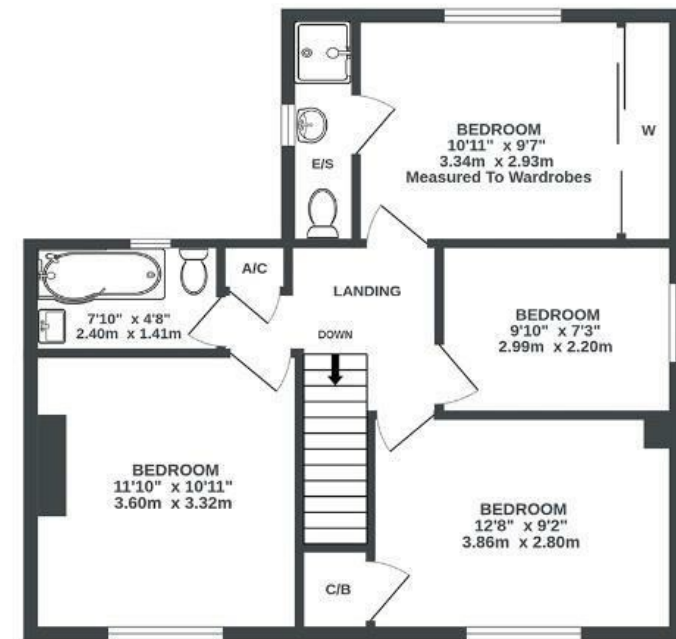
APPROXIMATE FLOOR AREA
125 SQM / 1346 SQFT



GROUND FLOOR
760 sq.ft. (70.6 sq.m.) approx.



1ST FLOOR
586 sq.ft. (54.4 sq.m.) approx.



Illustrations are for reference purposes only, measurements are approximate, not to scale.

Boardwalk

Bushythorn

CHEW STOKE, BRISTOL

£

£525,000



BS40 8XP

zzz

4 Bedrooms



2 Bathrooms

"We've lived in our home for the past 18 years and if we did not have to relocate we would not be selling it. We have good neighbours and live in a very quiet area. We love our large sunny garden where we've created a calm and tranquil space to sit and relax. Our sociable kitchen diner allows us to entertain and allow the beauty of our garden in, by opening up the bi-fold doors on a sunny day. We have used a lot of colour in our home to make it a warm and inviting."

