

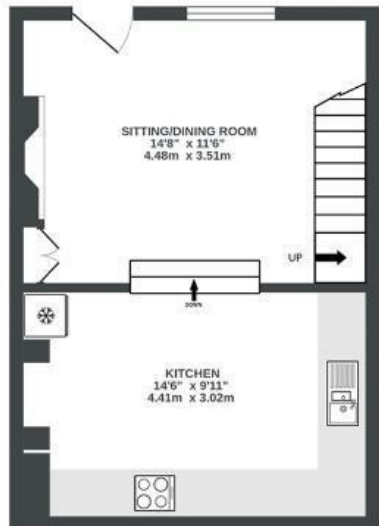
# Dunkerry Road

## WINDMILL HILL

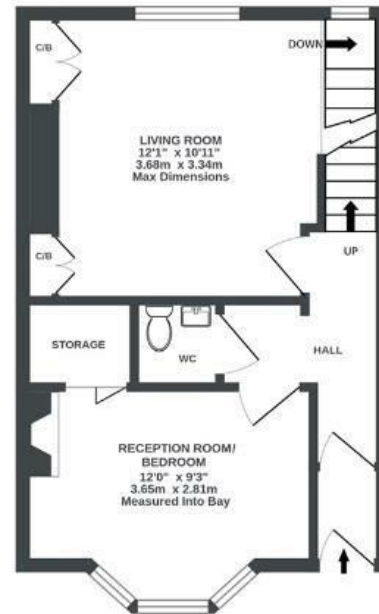
APPROXIMATE FLOOR AREA  
113.7 SQM / 1224 SQFT



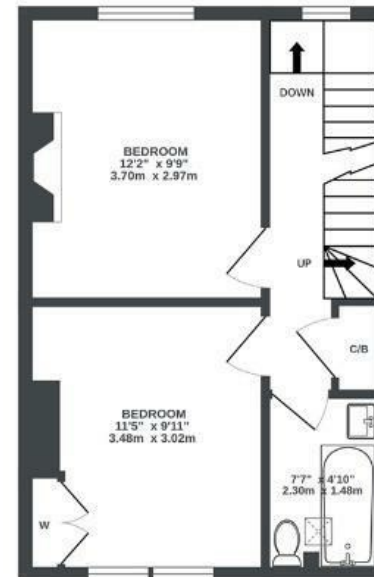
LOWER GROUND FLOOR  
305 sq.ft. (28.4 sq.m.) approx.



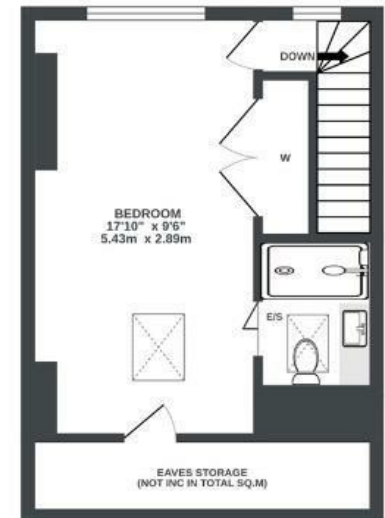
GROUND FLOOR  
343 sq.ft. (31.8 sq.m.) approx.



1ST FLOOR  
337 sq.ft. (31.3 sq.m.) approx.



2ND FLOOR  
239 sq.ft. (22.2 sq.m.) approx.



Illustrations are for reference purposes only, measurements are approximate, not to scale.

Boardwalk

# Dunkerry Road

, BRISTOL



£550,000



BS3 4LD



4 Bedrooms



3 Bathrooms

*"We have absolutely loved living and starting our family here. The house is so bright, with so many different spaces to it, and the decking and the garden are a real haven. Dunkerry Road is full of wonderful people, and the whole of Windmill Hill has a really special community. There are beautiful views wherever you look, and there's always something going on in Victoria Park, the City Farm, Southville or Harbourside to head to with friends or family. It's been a wonderful home."*

