

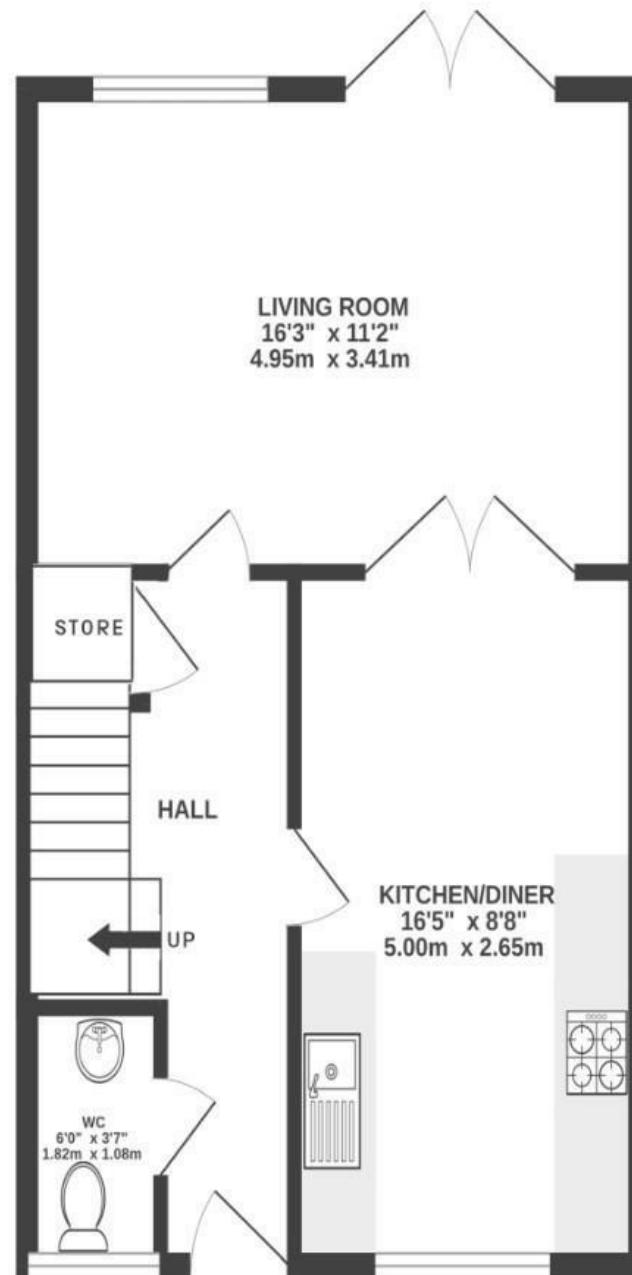
Bartholomews Square

HORFIELD

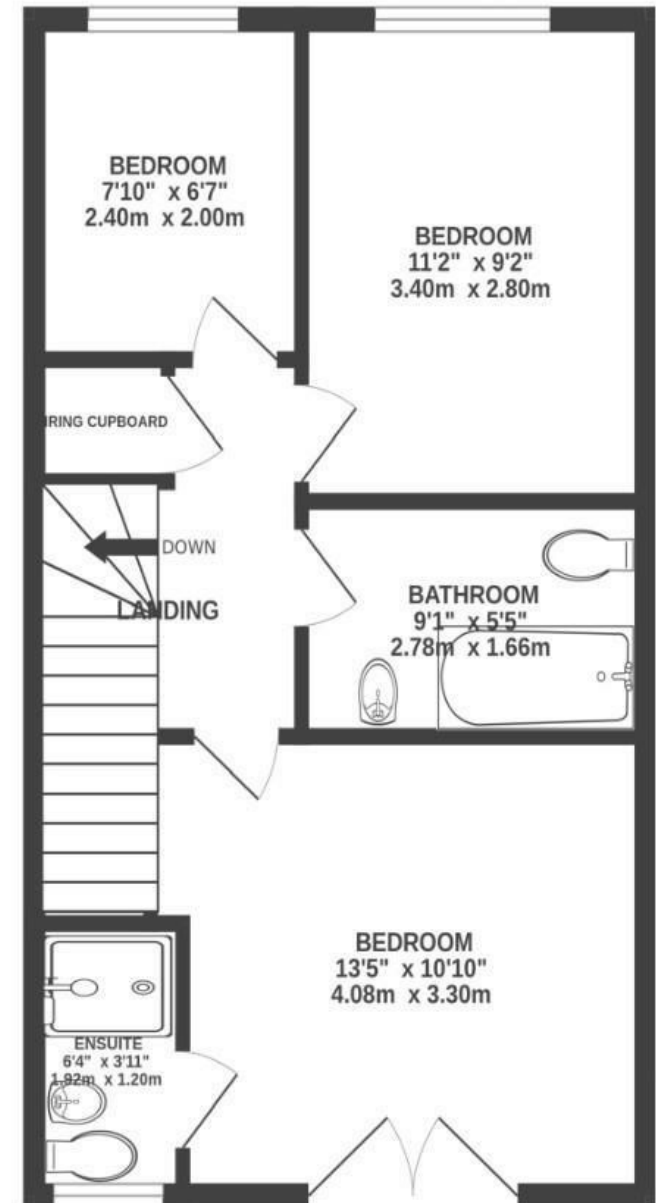
APPROXIMATE FLOOR AREA
82.0 SQM / 884 SQFT



GROUND FLOOR



FIRST FLOOR



Illustrations are for reference purposes only, measurements are approximate, not to scale.

Boardwalk

Bartholomews

HORFIELD, BRISTOL



£365,000



3 Bedrooms



BS7 0QB



3 Bathrooms

"I have loved living here in Bartholomews Square, its so convenient for walking to working at Southmead Hospital, no worries about parking! Being able to wander up and down Gloucester Road, with its amazing shops, pubs, restaurants and bus service. Having a small garden, with a reading nook, that is visited by numerous birds was a life saver during the pandemic."

