

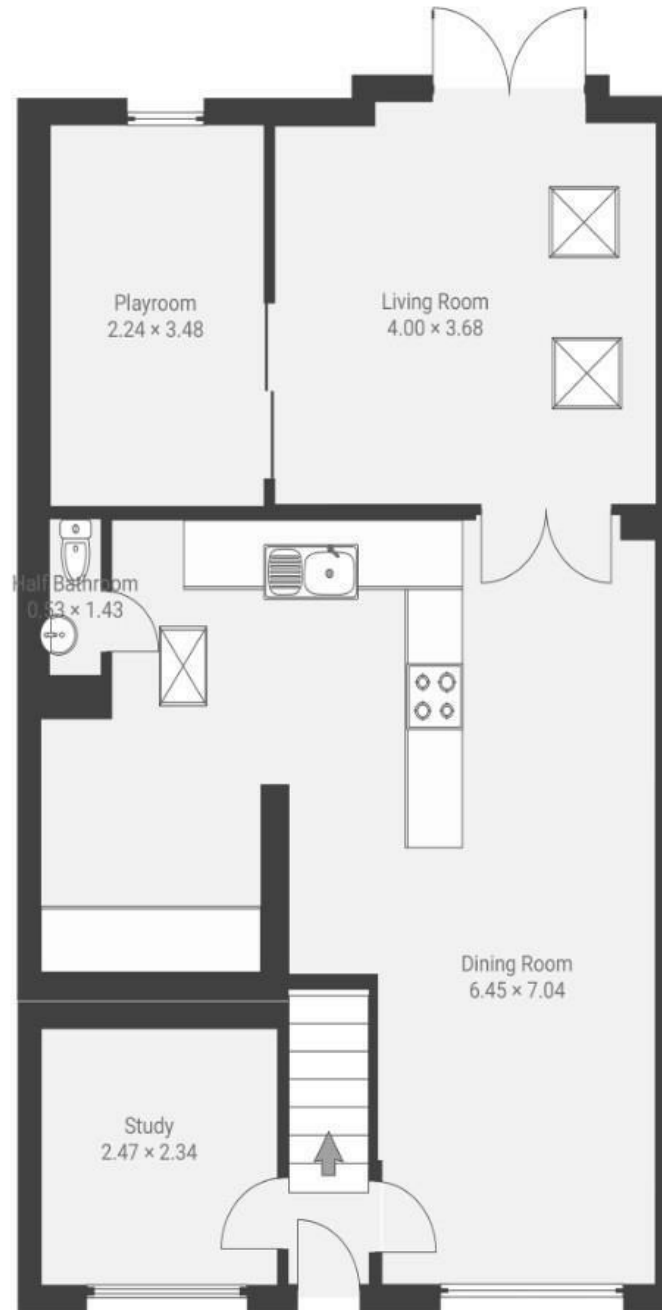
Bissex Mead

EMERSONS GREEN

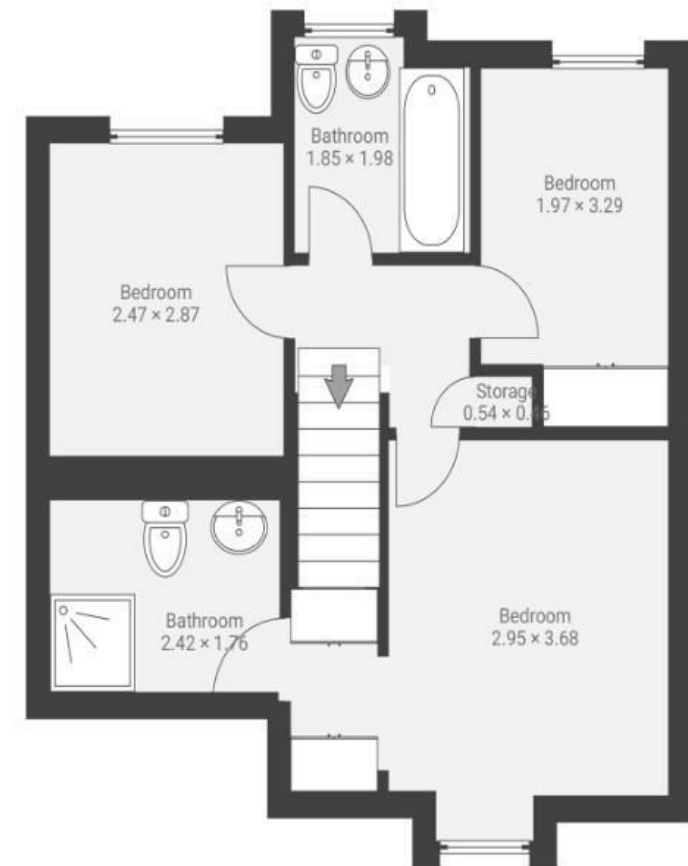
APPROXIMATE FLOOR AREA
98.0 SQM / 1054 SQFT



GROUND FLOOR



FIRST FLOOR



Illustrations are for reference purposes only, measurements are approximate, not to scale.

Boardwalk

Bissex Mead

EMERSONS GREEN, BRISTOL

£

£450,000

zzz

3 Bedrooms



BS16 7DY



2 Bathrooms

"It's a homely home, I've raised my son here for the majority of his life and he's now 18! We spend a lot of time in the garden which is beautiful in the summer, we've got so many memories of having our Sunday morning coffee outside and cooking dinner on the BBQ."

