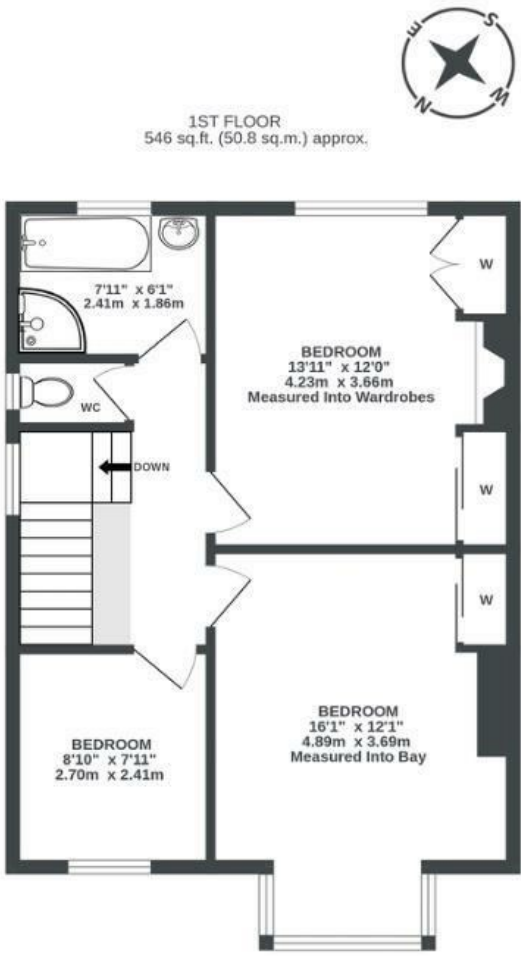
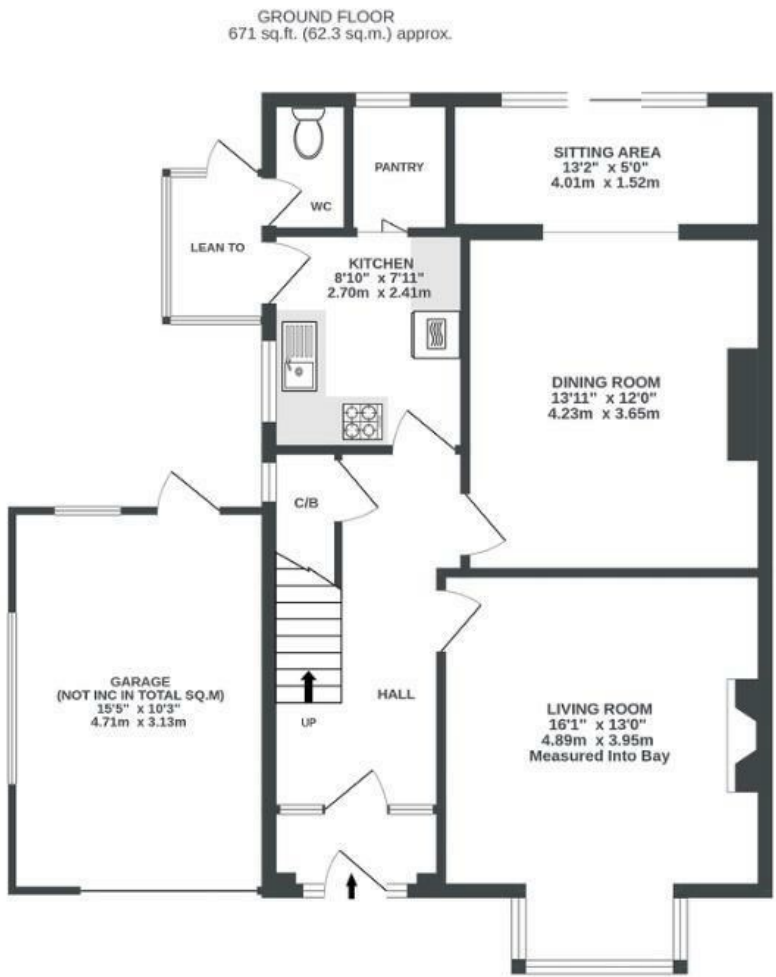


Southmead Road

FILTON

APPROXIMATE FLOOR AREA
113.1 SQM / 1217 SQFT



Illustrations are for reference purposes only, measurements are approximate, not to scale.

Boardwalk

Southmead Road

FILTON, BRISTOL



£425,000



3 Bedrooms



BS34 7RD



2 Bathrooms

"A much-loved home for many years, 666 is great for relaxing days, entertaining friends, perfect for summer parties in the garden or quiet evenings in watching the sunset over the fields opposite. The house is light and airy with spacious bedrooms and a pleasant feel throughout. The back garden gets lovely light for sitting out on the patio in spring and summer. The garden is easy to care for as now laid, mainly to lawn & shrubs and well stocked with perennials. It can also be great for growing vegetables and soft fruit, and has a separate shed for storing tools and garden equipment. It was our beloved home for decades."

