

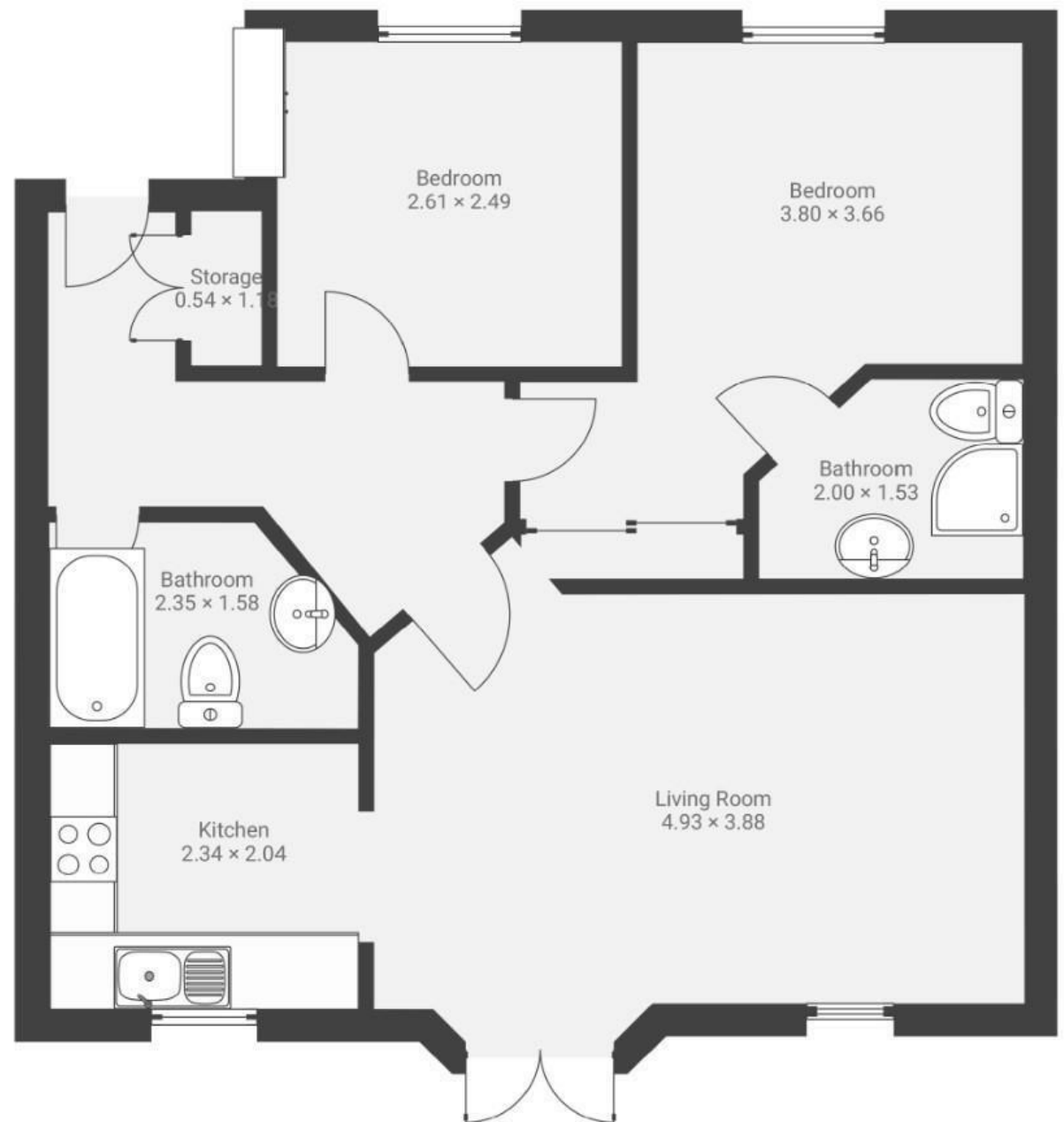
Pooles Wharf Court

HOTWELLS

APPROXIMATE FLOOR AREA
57.0 SQM / 613 SQFT



FIRST FLOOR



Illustrations are for reference purposes only, measurements are approximate, not to scale.

Boardwalk

Pooles Wharf , BRISTOL



£425,000



2 Bedrooms



BS8 4PD



2 Bathrooms

"Living in Pooles Wharf Court has been a fantastic experience. The riverside location offers a peaceful atmosphere, yet you're just a short walk from the lively City Centre with shops and cafe's."

