

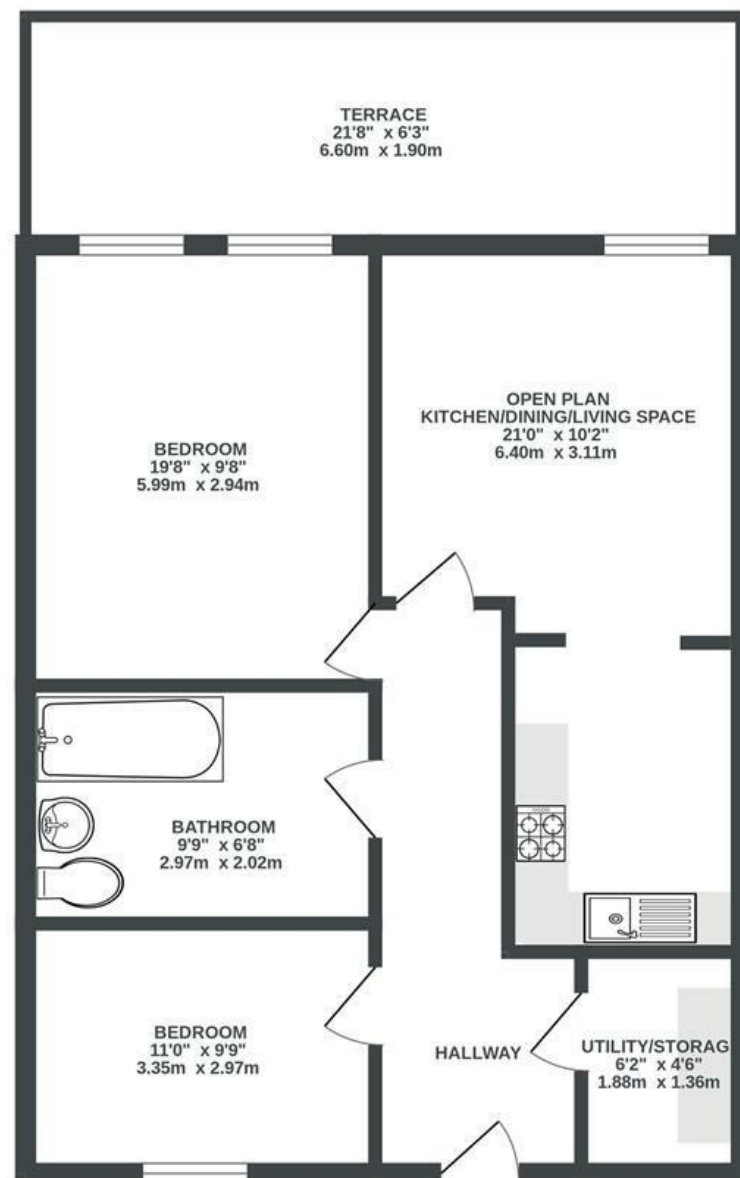
Armidale Place

MONTPELIER

APPROXIMATE FLOOR AREA
47.8 SQM / 515 SQFT



GROUND FLOOR



Boardwalk

Armidale Place , BRISTOL

£

£275,000

zzz

2 Bedrooms



BS6 5BQ



1 Bathrooms

"We have owned this flat for 15 years and it has served many useful purposes for us from a home to a rental property. The location is great you have Boston Tea Party on your doorstep and the city centre is just a short walk away. There is always plenty of entertainment, live music and places to eat on Stokes Croft, yet the flat itself is tucked away from the hustle and bustle of the city."

