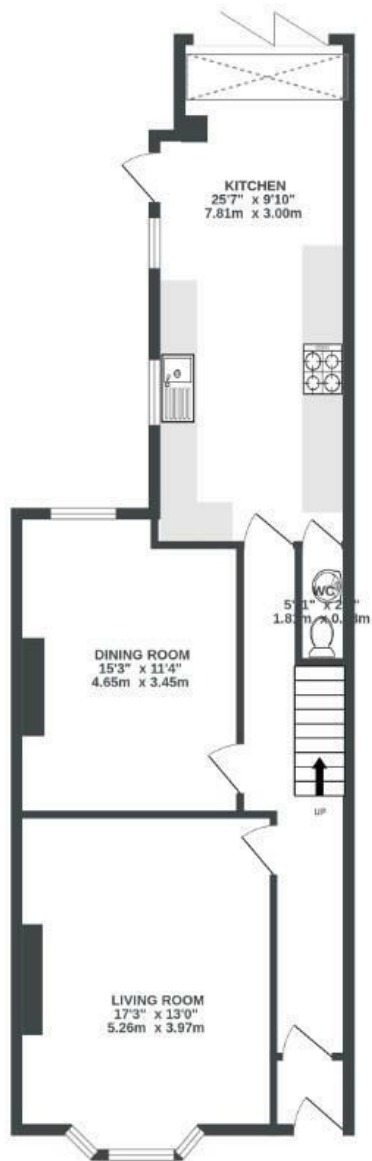


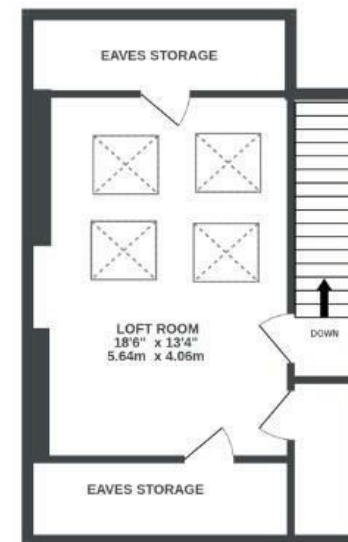
GROUND FLOOR
749 sq.ft. (69.6 sq.m.) approx.



1ST FLOOR
675 sq.ft. (62.7 sq.m.) approx.



2ND FLOOR
420 sq.ft. (39.1 sq.m.) approx.



TOTAL FLOOR AREA : 1845 sq.ft. (171.4 sq.m.) approx.

Whilst every attempt has been made to ensure the accuracy of the floorplan contained here, measurements of doors, windows, rooms and any other items are approximate and no responsibility is taken for any error, omission or mis-statement. This plan is for illustrative purposes only and should be used as such by any prospective purchaser. The services, systems and appliances shown have not been tested and no guarantee as to their operability or efficiency can be given.
Made with Metropix ©2025

~~Boardwalk~~

Brecknock Road

, BRISTOL

£

£725,000



BS4 2DE

zzz

4 Bedrooms



2 Bathrooms

"We have loved living here on Brecknock Road, especially the proximity to the city as well as local green spaces like Arnos Vale and Victoria Park. Our street community is brilliant, from banging saucepans and watching fireworks together at midnight in Perretts Park on NYE to lending each other DIY tools for home and garden improvements. Having Hillcrest school and the local shops on our doorstep is really handy, and we highly recommend Dan and his team at Bank for a high quality evening of food and drink with only a short stagger up the hill back home!"

