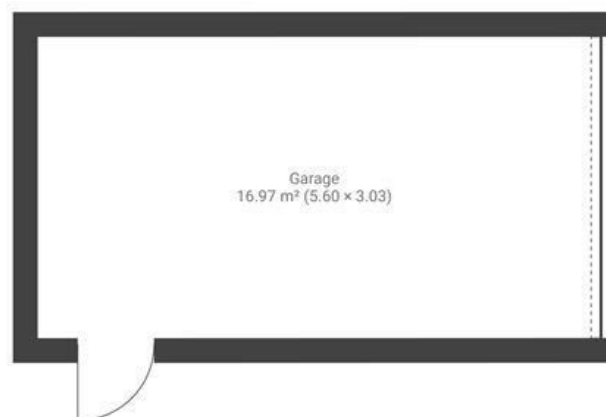
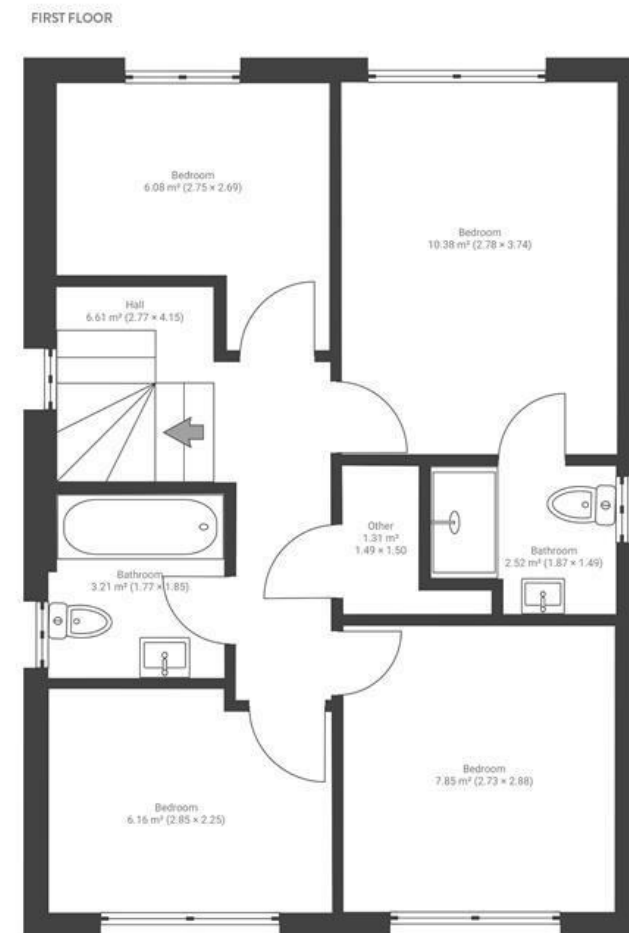
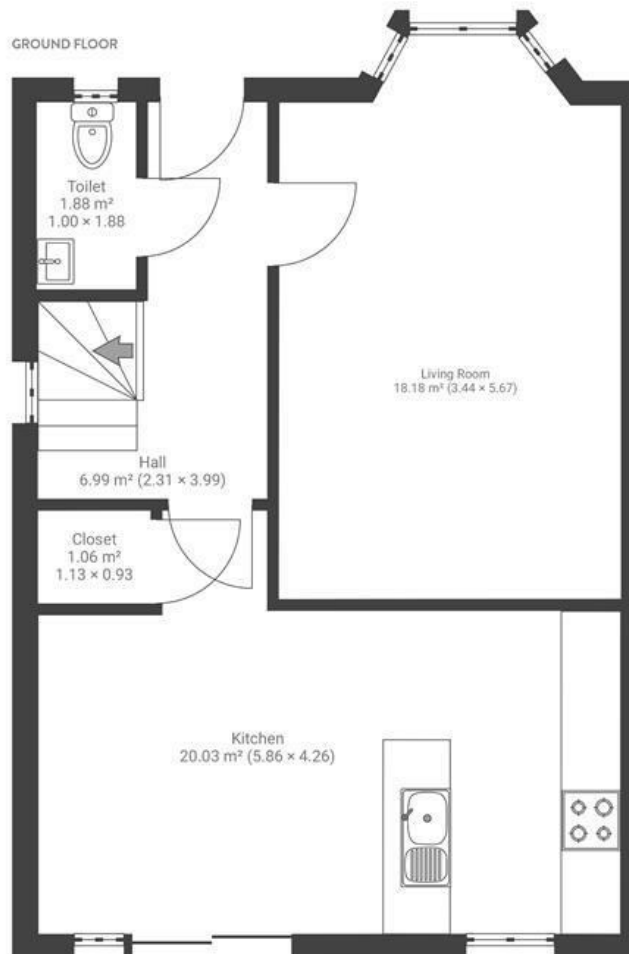


Platts Wood

CHESWICK VILLAGE

APPROXIMATE FLOOR AREA
97.3 SQM / 1047 SQFT



Boardwalk

Platts Wood

CHESWICK VILLAGE, BRISTOL



£500,000



4 Bedrooms



BS16 1FY



3 Bathrooms

"Cheswick Village has provided us with so many memories since moving here as a newly married couple to now being a family of four. Some key memories include being taking the dog for evening summer walks after work in Stoke Park up to the view point looking over Bristol, enjoying watching England at the Euro's in BessellScotts and our toddler enjoying his first ice cream from Pepenero in the square."

