

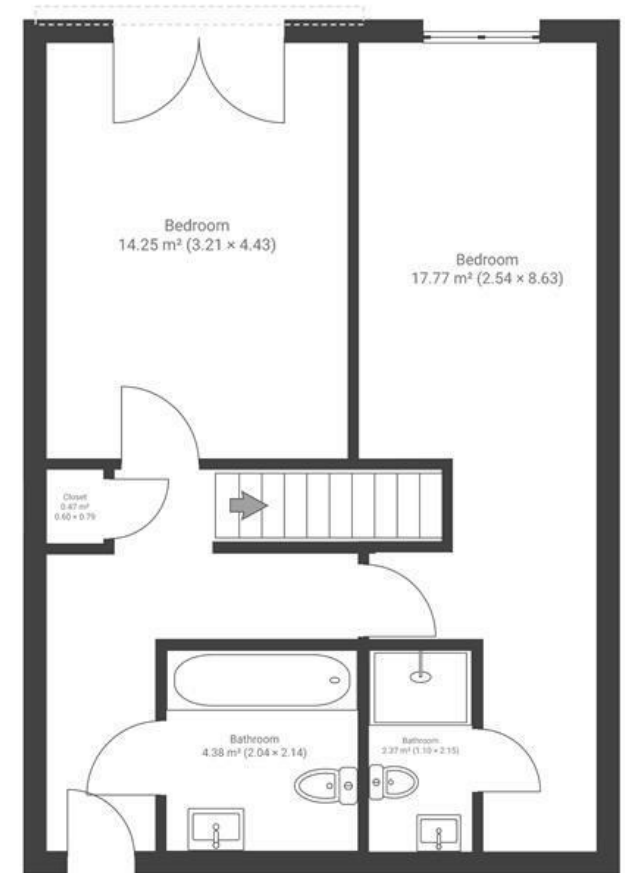
# Valley Heights

## BISHOPSWORTH

APPROXIMATE FLOOR AREA  
81.2 SQM / 874 SQFT



GROUND FLOOR



FIRST FLOOR



Boardwalk

# Bishopsworth

, BRISTOL



£240,000



2 Bedrooms



BS13 7LN



2 Bathrooms

*"This flat has a larger garden than most houses! it's a tranquil place as it backs onto a forest and is away from the main road, it's the perfect garden to sit and relax while the morning sun hits your face and you listen to the birds sing. We've owned this flat for many years and now it's time for someone else to call it there loving home."*

