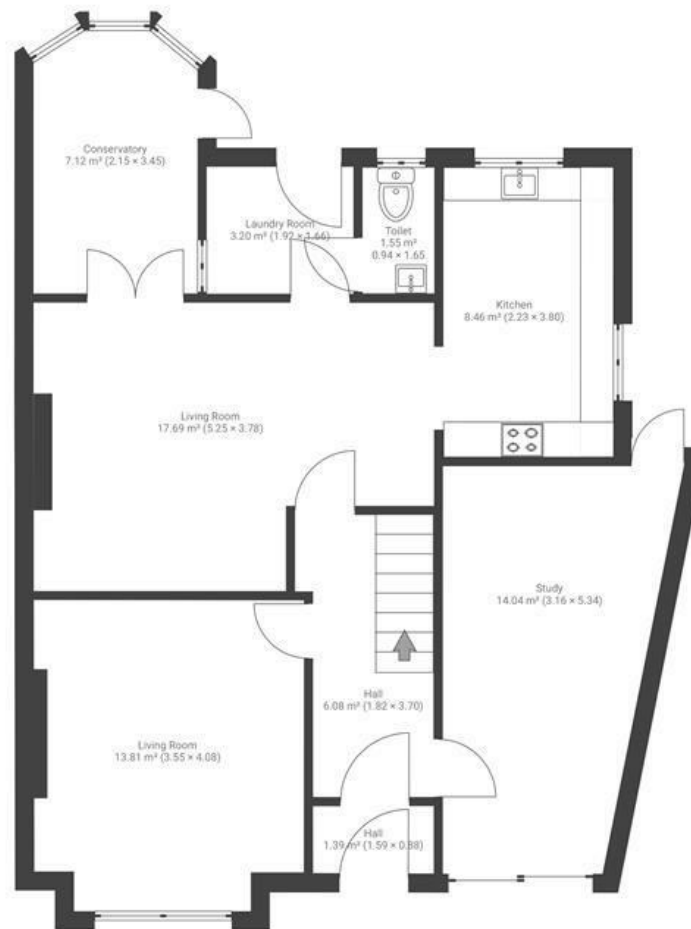


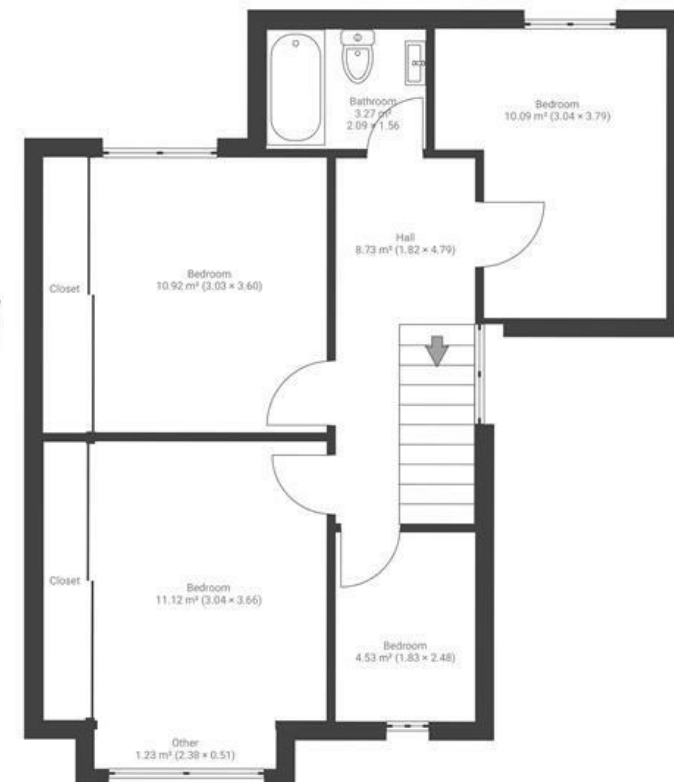
Perrycroft Road

BISHOPSWORTH

APPROXIMATE FLOOR AREA
134.5 SQM / 1447 SQFT



GROUND FLOOR



FIRST FLOOR

Boardwalk

Perrycroft Road , BRISTOL

£

£485,000



BS13 7RY

zzz

4 Bedrooms



2 Bathrooms

"We love the local area which is why we are planning on staying local. It's great to have easy access to the city but also to have Chew Magna lake just 10mins away. We have amazing views. We love our garden and it's usually really peaceful. We've got all the amenities on our doorstep but as our road isn't a through road to anywhere very limited noise from outside traffic. Campus Pool on the corner have a lovely cafe. If you have children there is the playgroup at SPARC and a soft play."

