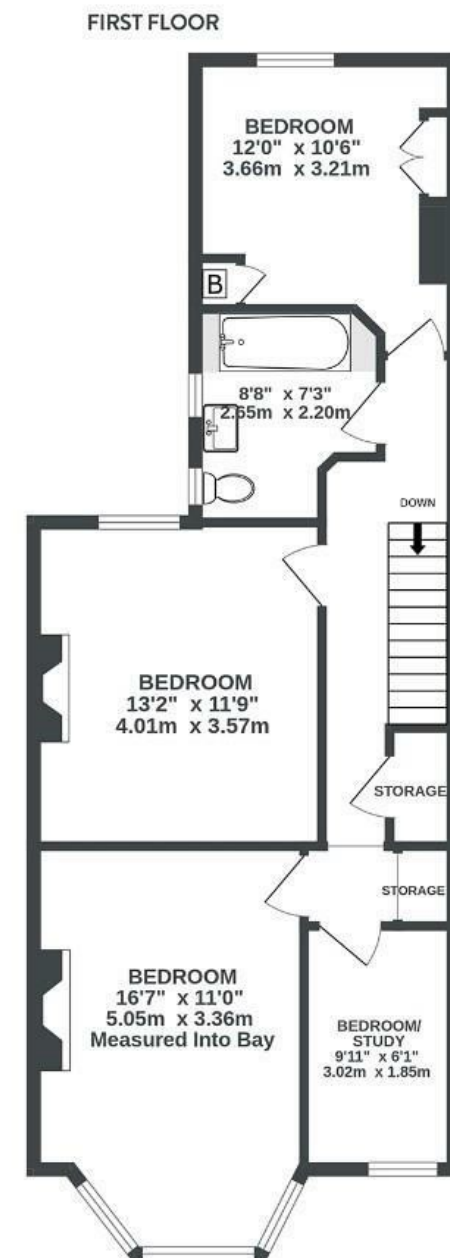
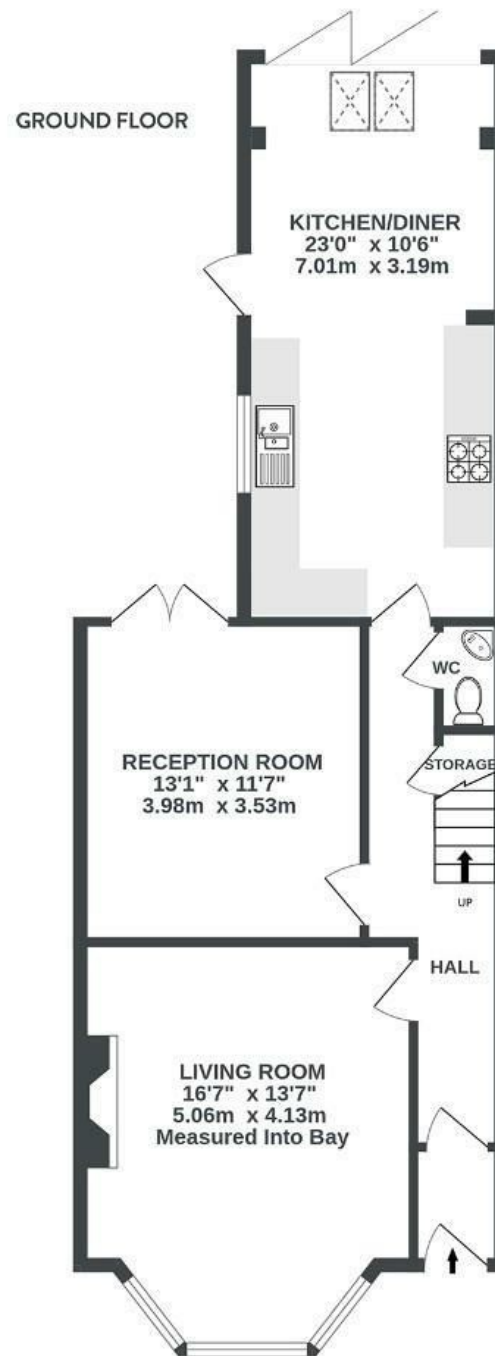


# Wells Road KNOWLE

APPROXIMATE FLOOR AREA  
138 SQM / 1485 SQFT



Boardwalk

# Wells Road , BRISTOL

£

£600,000



BS4 2QL

zzz

4 Bedrooms



2 Bathrooms

*"We have loved living in this house for the past 20 years. It has been the perfect place to raise two sons with loads of space inside and out. The garden is a source of huge joy, morning coffee on the completely private patio next to the kitchen, right through to sunset in the self-constructed loggia at the back of the garden. The location has been brilliant for many reasons, partly because of commuting from Temple Meads on and off, and we are downsizing to somewhere very nearby."*

