

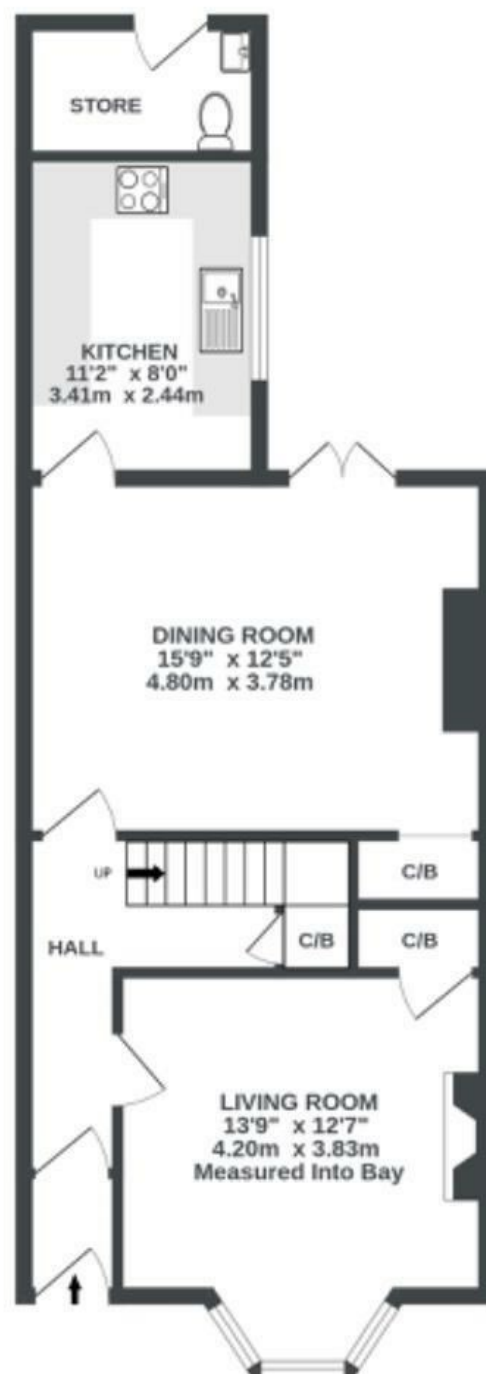
Green Street

TOTTERDOWN

APPROXIMATE FLOOR AREA
103.1 SQM / 1110 SQFT



GROUND FLOOR
575 sq.ft. (53.4 sq.m.) approx.



1ST FLOOR
535 sq.ft. (49.7 sq.m.) approx.



Illustrations are for reference purposes only, measurements are approximate, not to scale.

Boardwalk

Green Street , BRISTOL

£

£435,000



BS3 4UB

zzz

2 Bedrooms



1 Bathrooms

"We love the feeling of space inside our home with its high ceilings and generously sized rooms. We have enjoyed decorating our home and filling it with colour - including painting our rear wall lemon yellow which makes our kitchen and dining room glow. Temple Meads and the city centre are within easy walking distance. Victoria Park is on our doorstep and we have pubs, restaurants and bakeries a stone's throw away. We have hot air balloons flying over us in the summer which is pretty special."

