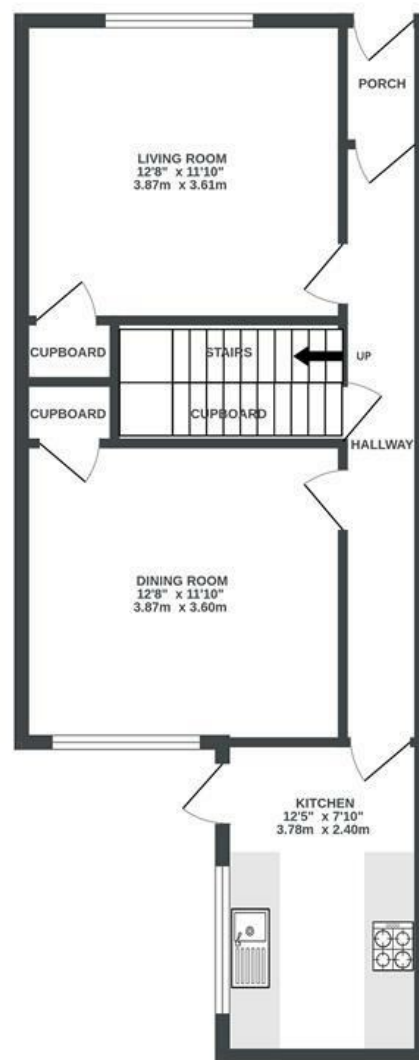


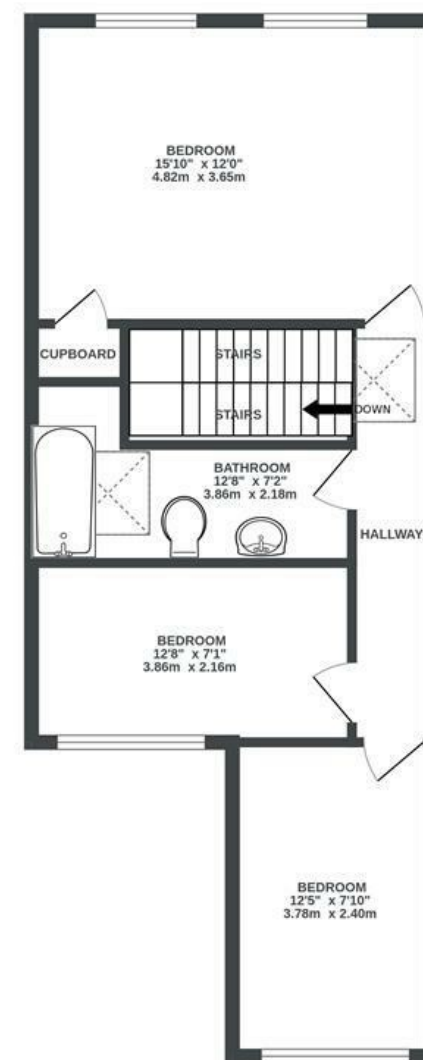
Oxford Street

TOTTERDOWN

APPROXIMATE FLOOR AREA
101.9 SQM / 1097 SQFT



GROUND FLOOR



FIRST FLOOR

Boardwalk

Oxford Street

TOTTERDOWN, BRISTOL



£460,000



3 Bedrooms



BS3 4RQ



1 Bathrooms

"We have loved living in Totterdown with so many amenities quite literally on our doorstep with the bakery and Italian restaurant as firm favourites. There's a great community which we will really miss, especially having the Art Trail and live music events at the Oxford every year. It is an amazing spot for some lovely walks which has been great for our young family with Victoria Park and Arnos Vale around the corner, perfect with a pit stop at Bocca Bar."

