

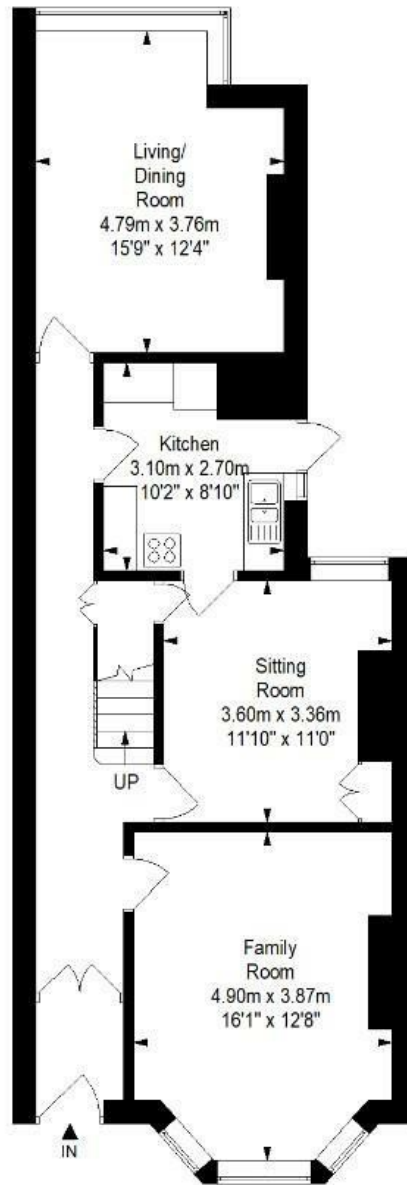
Kensington Park Road, Brislington, Bristol, BS4 3HT

Approximate Gross Internal Area = 141.8 sq m/ 1526.4 sq ft

(Excludes Garage)

Garage = 16.5 sq m/ 177.6 sq ft

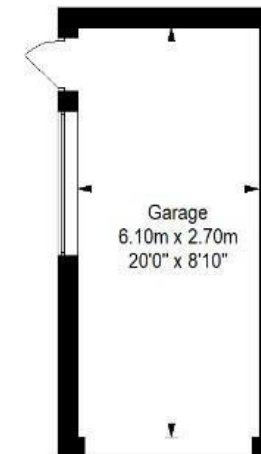
Total Area = 158.3 sq m/ 1704.0 sq ft



Ground Floor



First Floor



Garage

This floor plan has been drawn using RICS guidelines (GIA)

Disclaimer : Please note this floor plan is for marketing purposes and is to be used as guide only.
All Efforts have been made to ensure its accuracy at time of print

Boardwalk

Kensington Park

BRISLINGTON, BRISTOL

£

£525,000

zzz

4 Bedrooms



BS4 3HT



1 Bathrooms

"This home has been in our family for many years. We love the period features, large rooms and lovely south facing rear garden."

